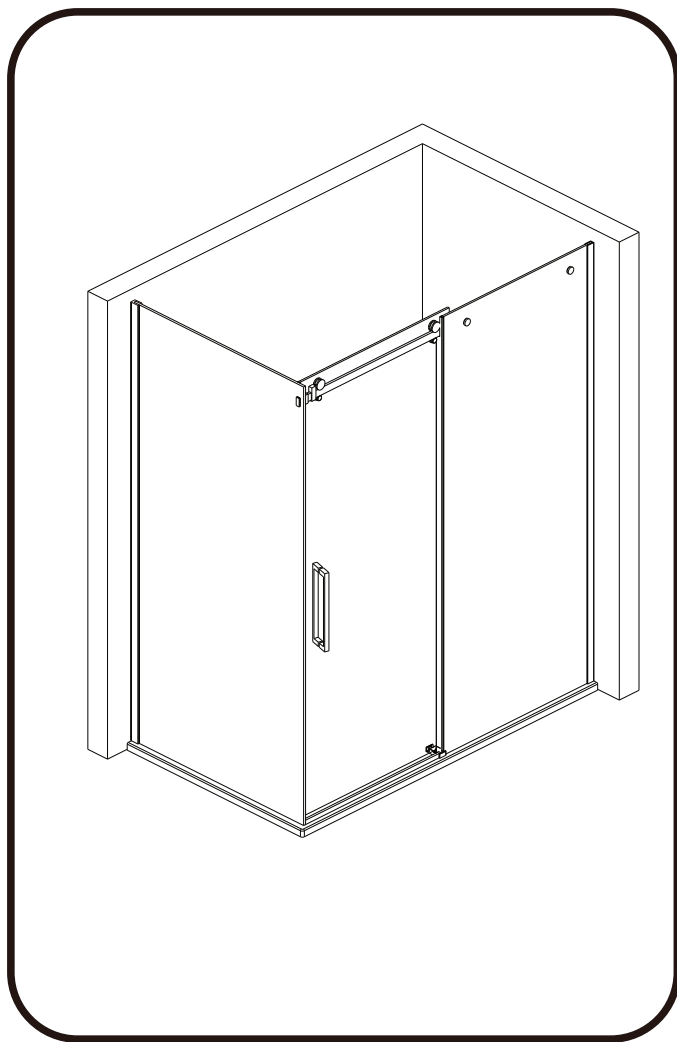


# MODEL : LWIDGI (WITH SIDE PANEL)

## INSTALLATION INSTRUCTIONS



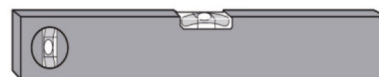
### Tools Required



**Drill**



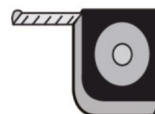
6mm Masonry Drill  
3.2mm HSS Drill



**Spirit level**



**Sealant Gun**



**Tape Measure**



**Pencil**



**PH2 TYPE  
Screwdriver**

Please not hand tools NOT supplied.

## IMPORTANT

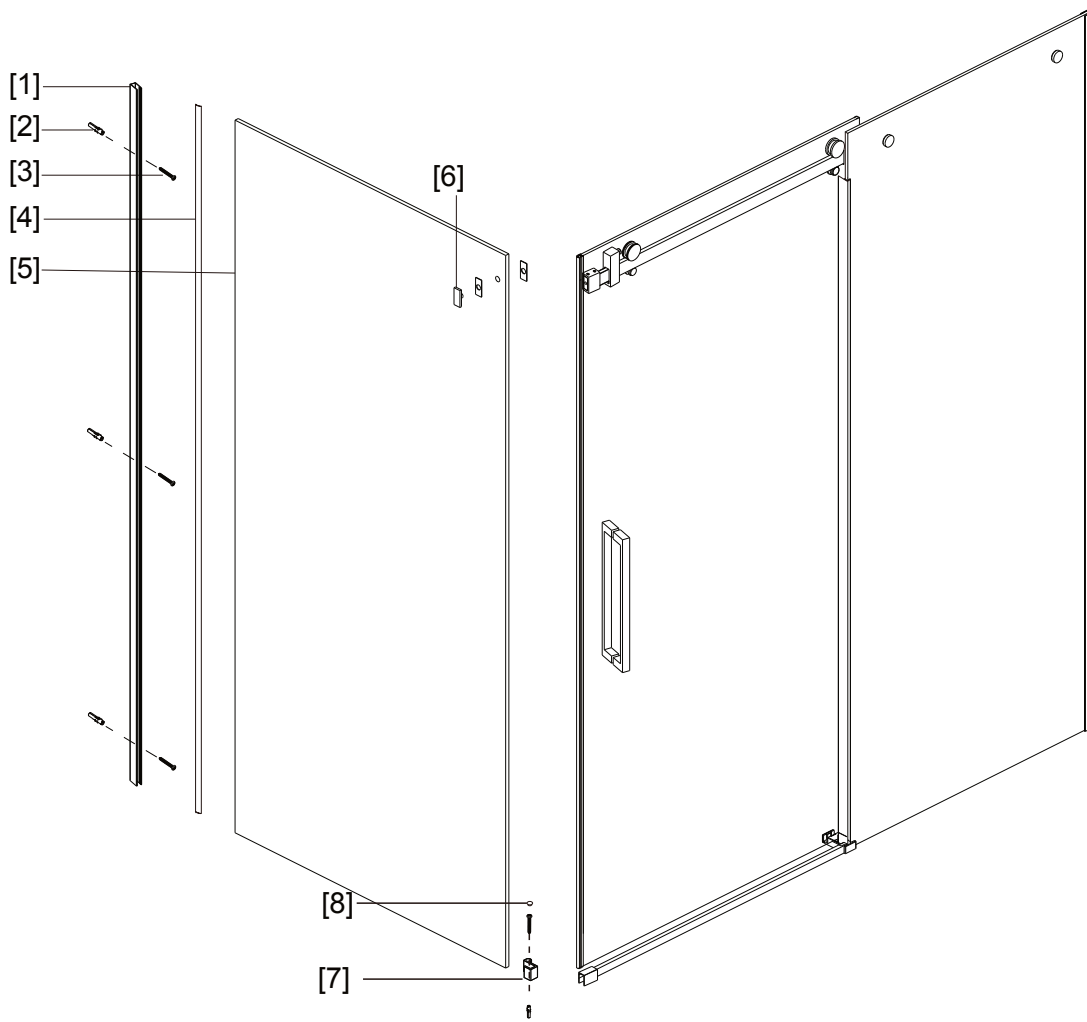
These instructions assume that installation is done against solid/tiled walls.

The wall plugs supplied with the installation kit are for use on solid walls. Hollow or stud-partition walls will require alternative fixings. Please consult with a reputable trades person or hardware supplier for the correct type of fixing.

It may also be necessary to consult your tiling supplier about the correct method drilling your tiles.



## MODEL : LWIDGI (WITH SIDE PANEL)

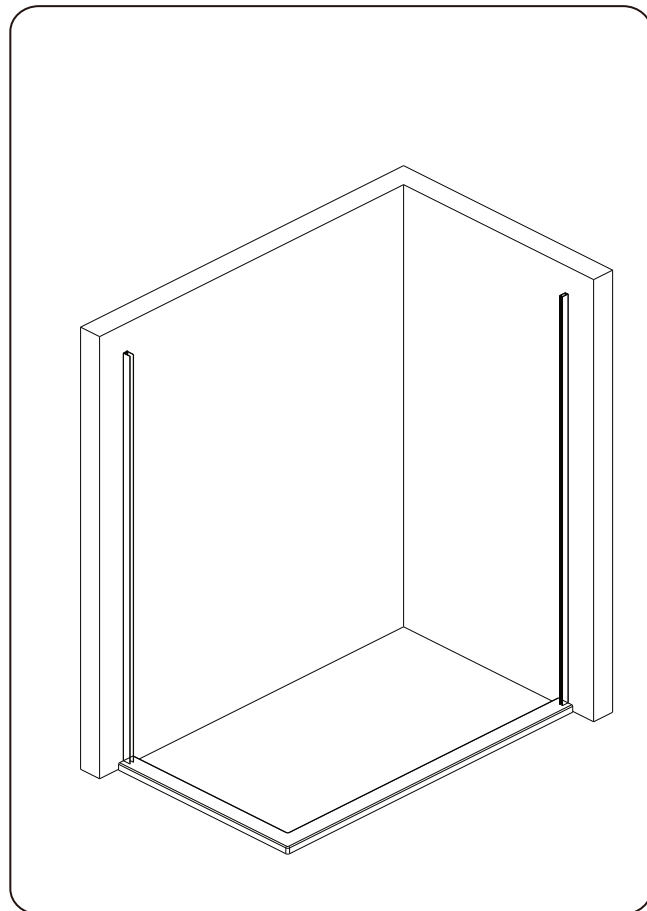
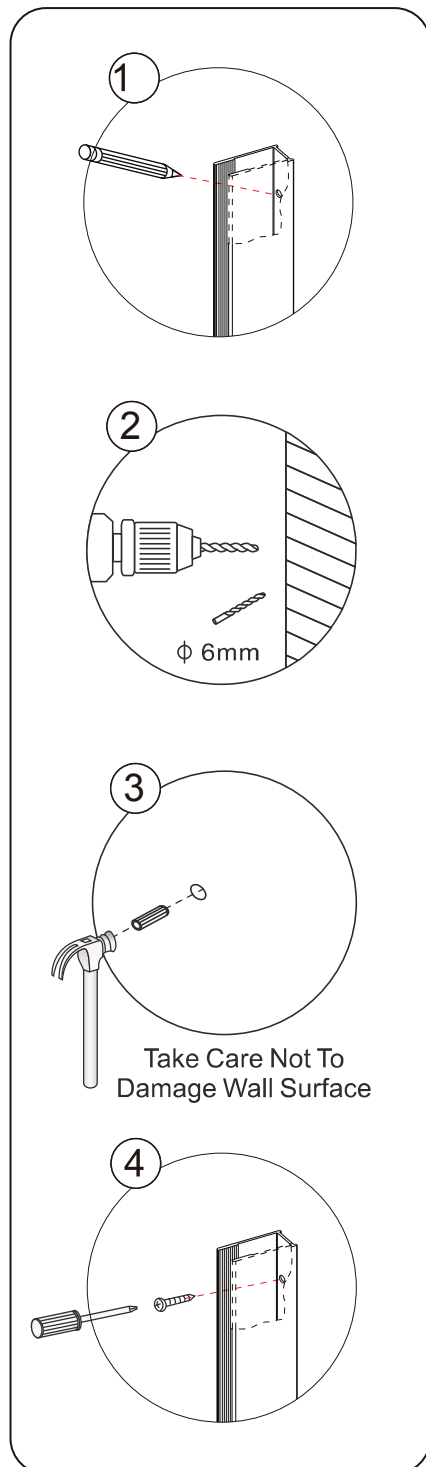


NO.	Description	Qty
1	Wall Profile	1
2	Wall Anchor	4
3	Round Screw M4x30	4
4	T Shaped Seal	1
5	Side Panel Glass	1
6	Side Panel Rail Bracket	1
7	Corner Part	1
8	Decorative Cover	1



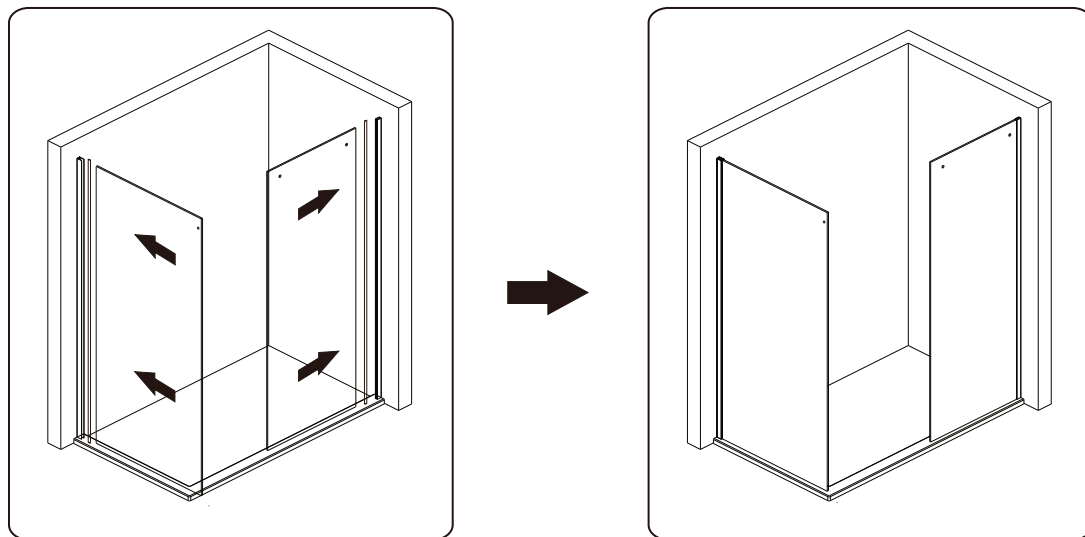
## INSTALLATION STEPS

### Step 1

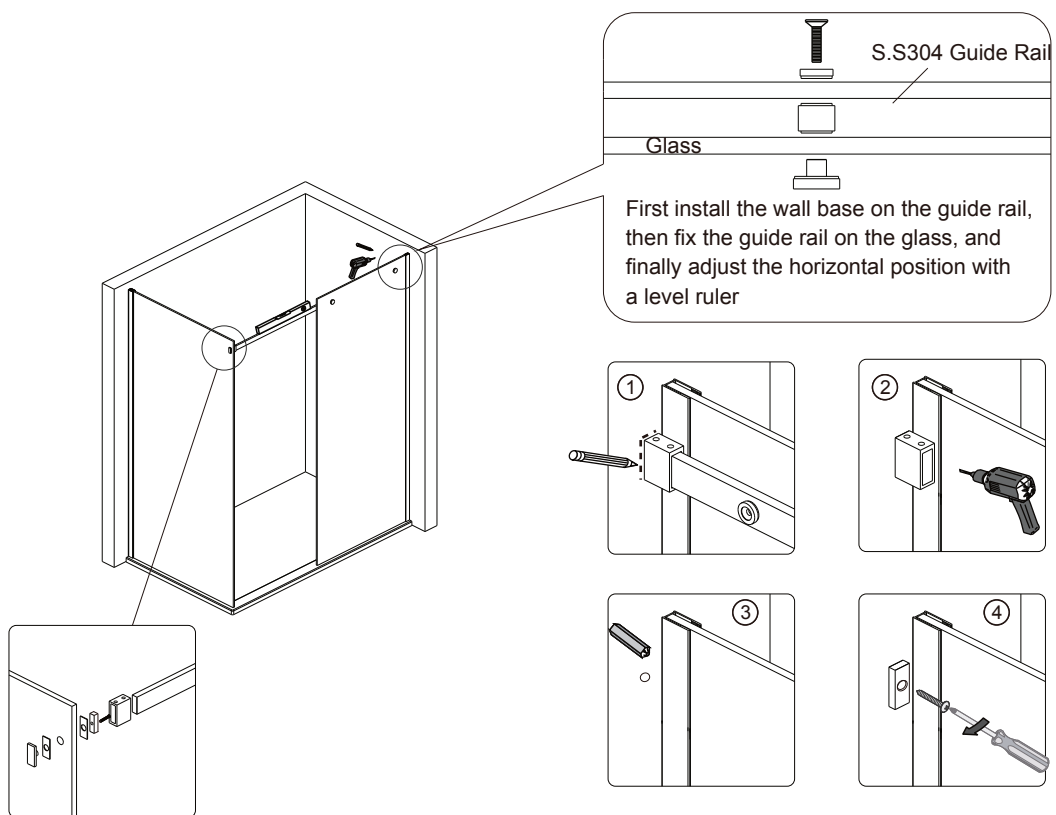


# MODEL : LWIDGI (WITH SIDE PANEL)

## Step 2

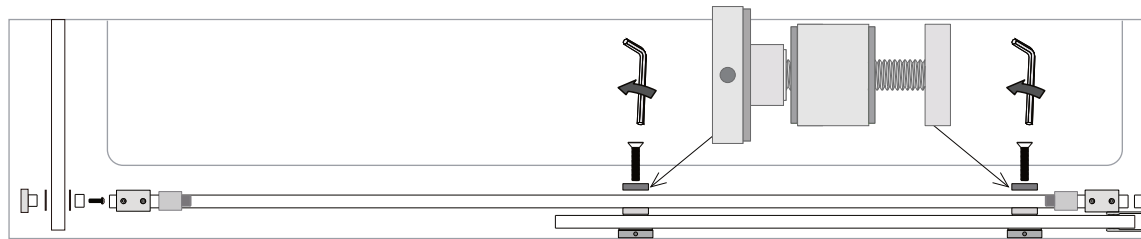


## Step 3

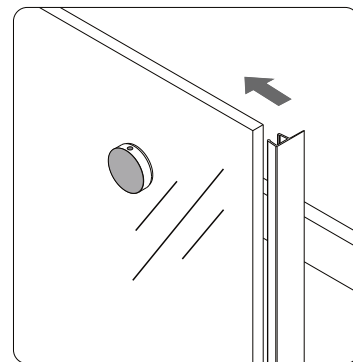
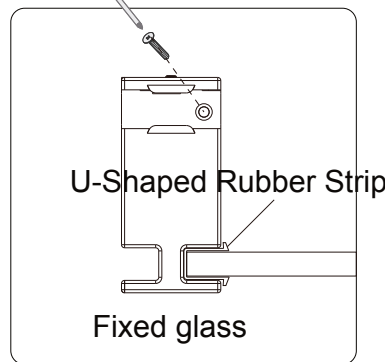
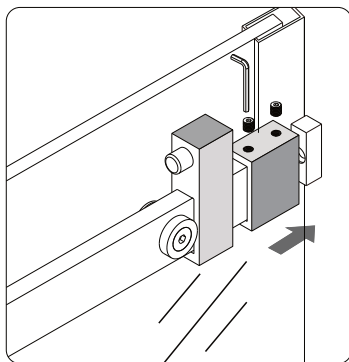


# MODEL : LWIDGI (WITH SIDE PANEL)

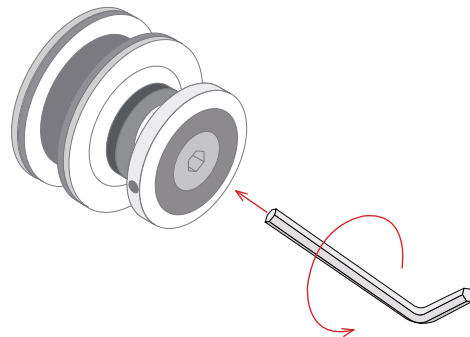
## Step 4



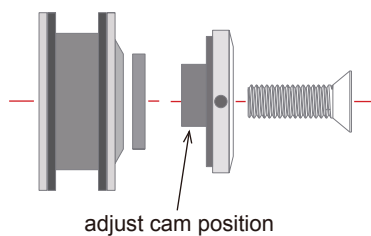
Install the anti-collision block onto the guide rail first,  
and then lock the guide rail and wall base tightly



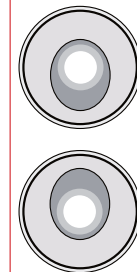
## Step 5



Disassemble the pulley and  
install it on the glass



Cam position down=glass down

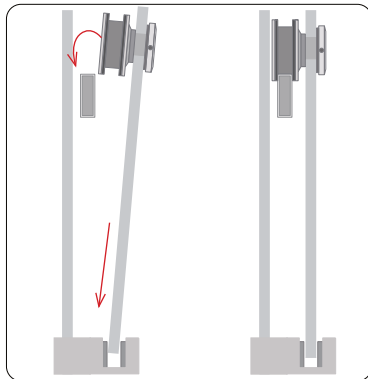


Cam position upwards=glass rises upwards

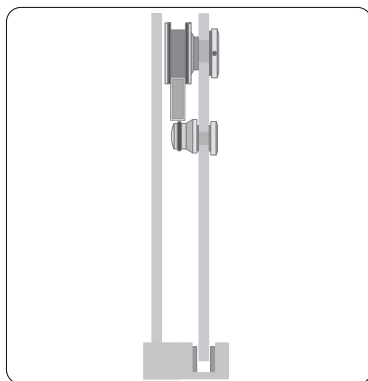
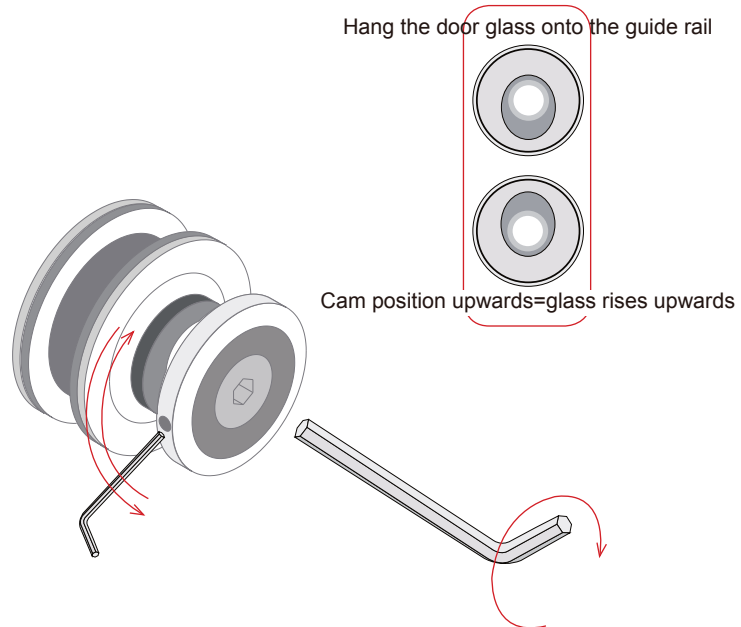


# MODEL : LWIDGI (WITH SIDE PANEL)

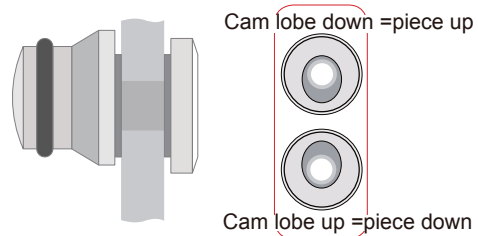
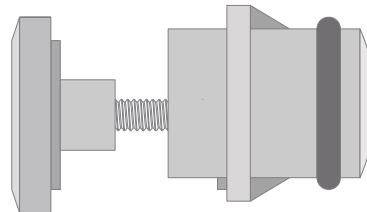
## Step 6



Hang the door glass on the guide rail.

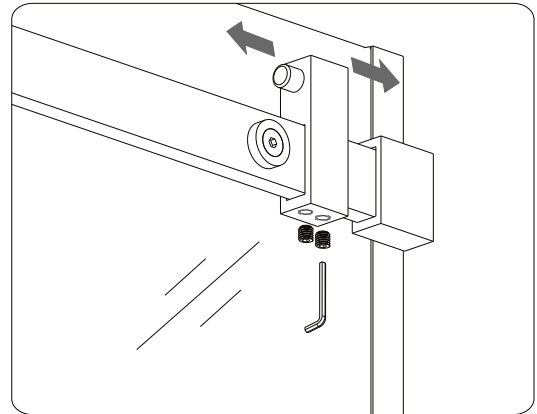
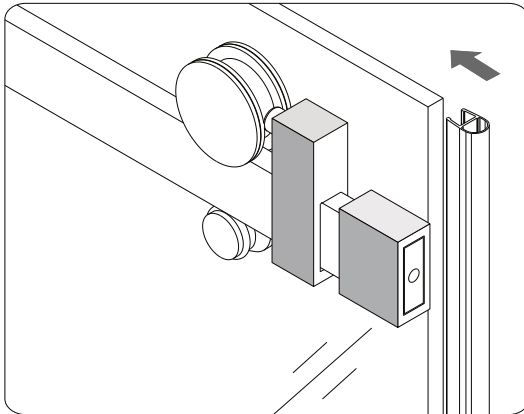


Install anti jump components

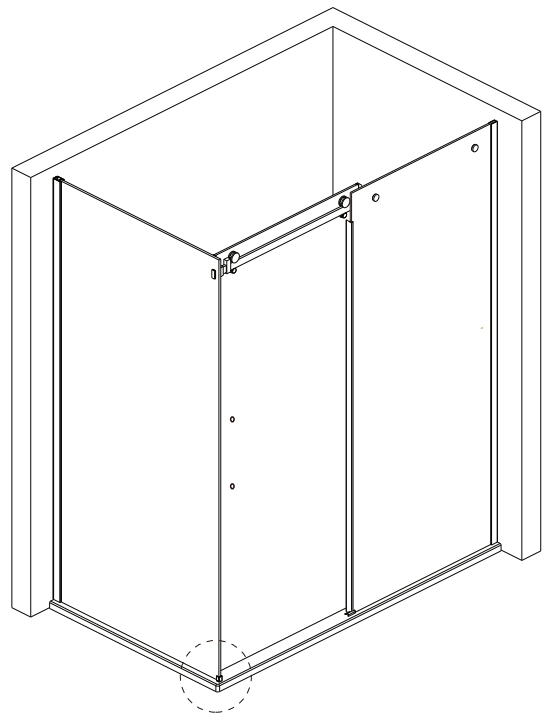
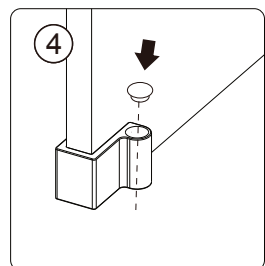
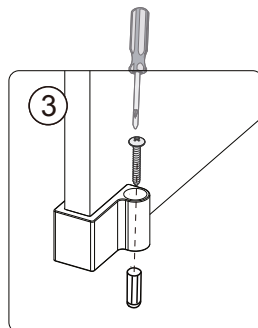
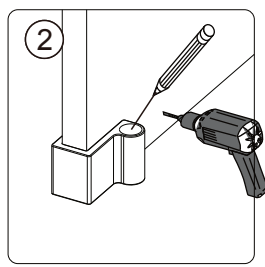
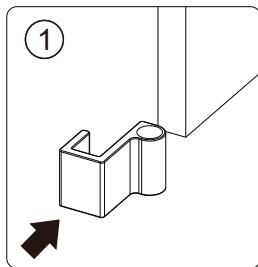


# MODEL : LWIDGI (WITH SIDE PANEL)

## Step 7

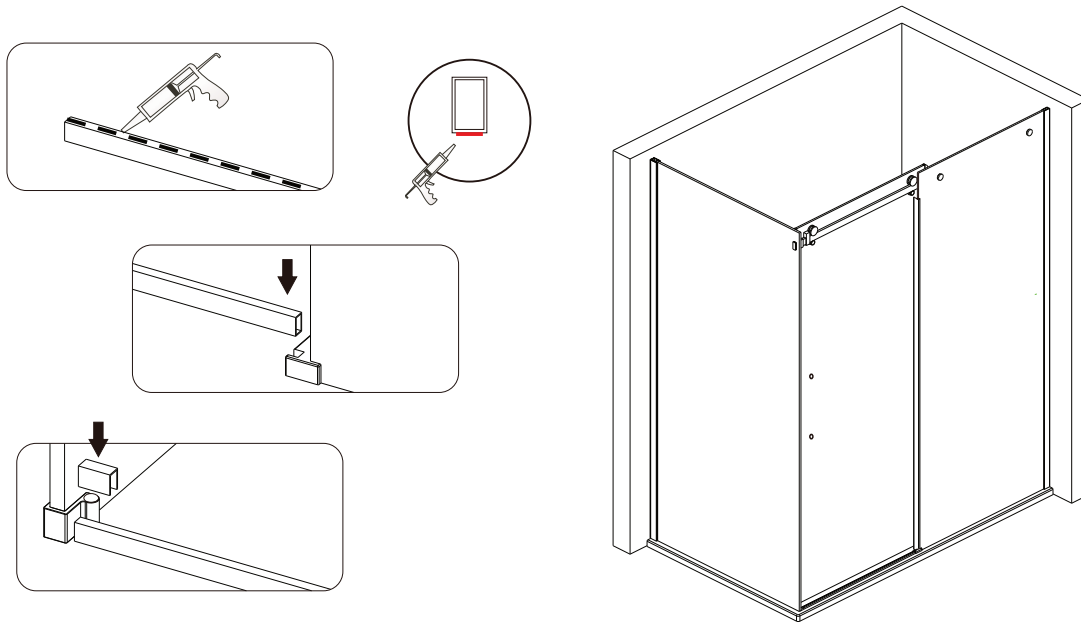


## Step 8

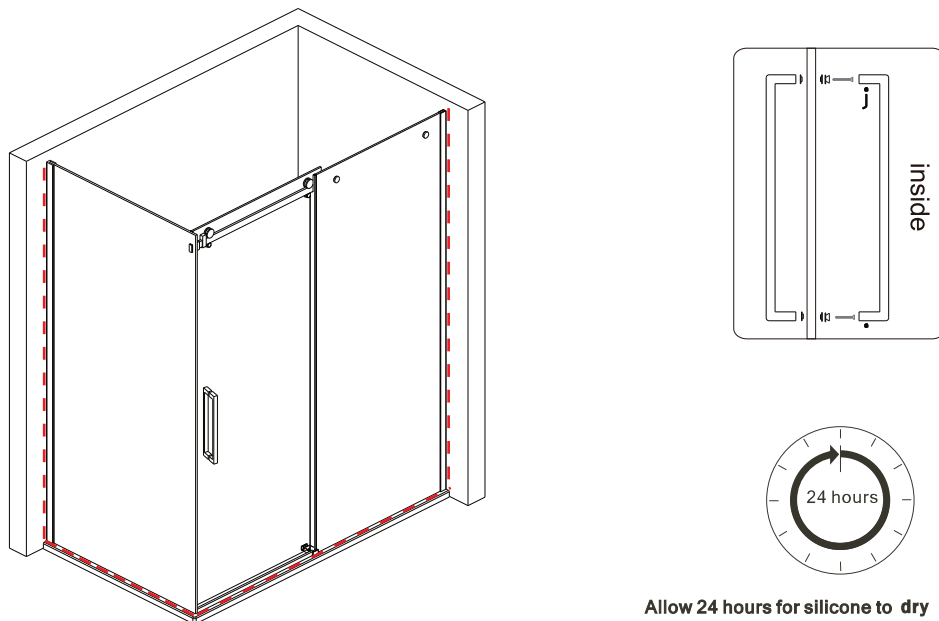


# MODEL : LWIDGI (WITH SIDE PANEL)

## Step 8



## Step 9



Allow 24 hours for silicone to dry before use.

Silicone on the outside edge only

