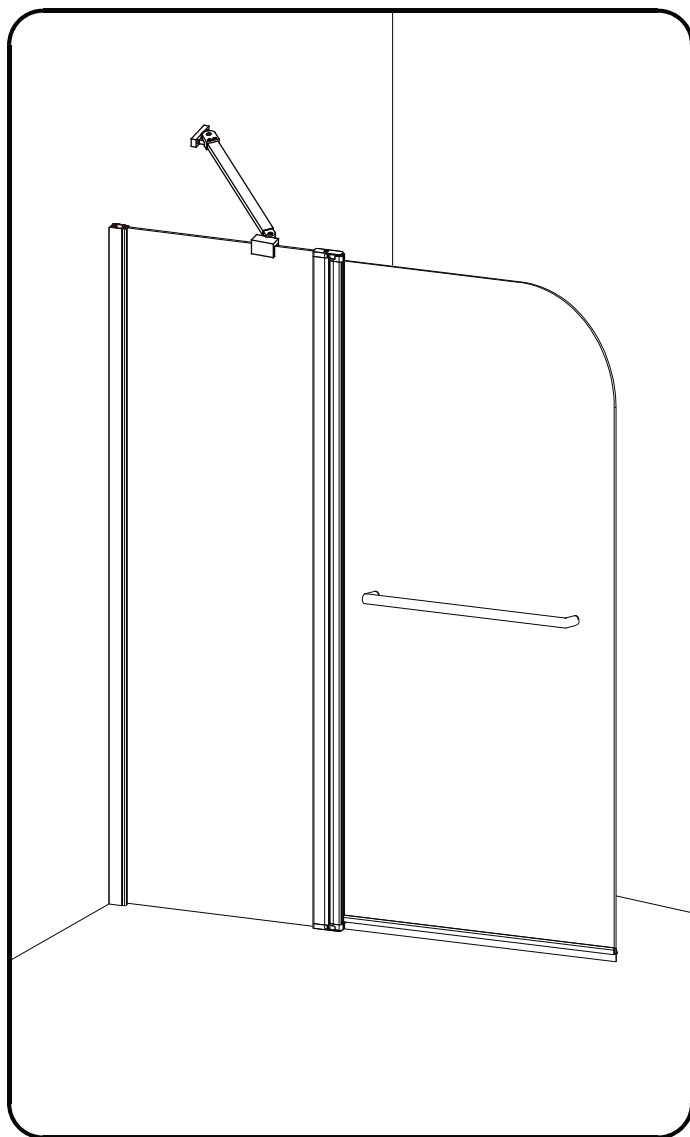


INSTALLATION INSTRUCTIONS



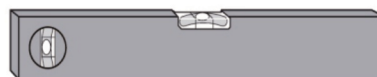
Tools Required



Drill



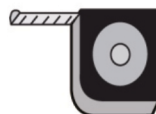
6mm Masonry Drill
3.2mm HSS Drill



Spirit level



Sealant Gun



Tape Measure



Pencil



**PH2 TYPE
Screwdriver**

Please not hand tools NOT supplied.

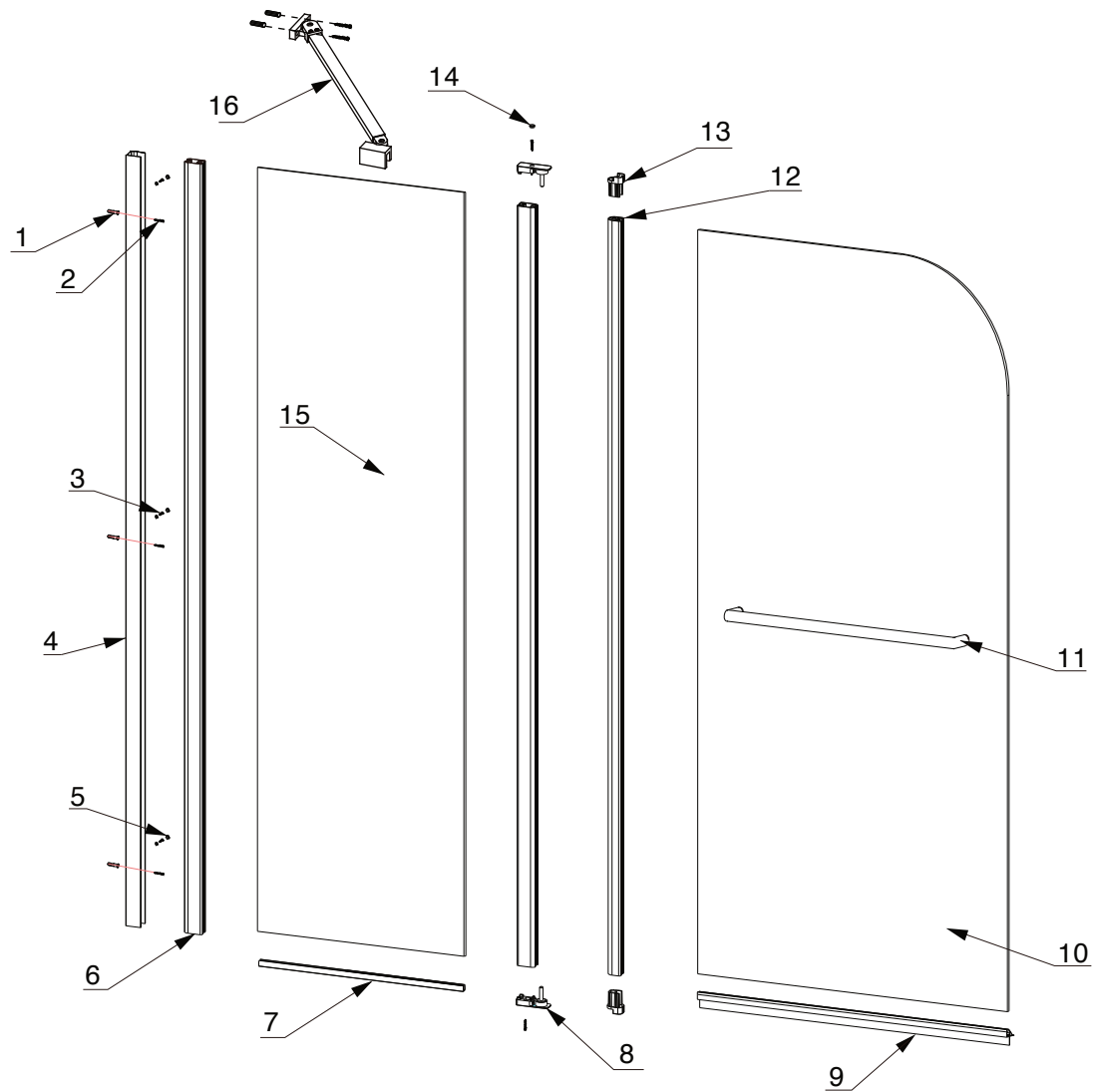
IMPORTANT

These instructions assume that installation is done against solid/tiled walls.

The wall plugs supplied with the installation kit are for use on solid walls. Hollow or stud-partition walls will require alternative fixings. Please consult with a reputable trades person or hardware supplier for the correct type of fixing.

It may also be necessary to consult your tiling supplier about the correct method drilling your tiles.

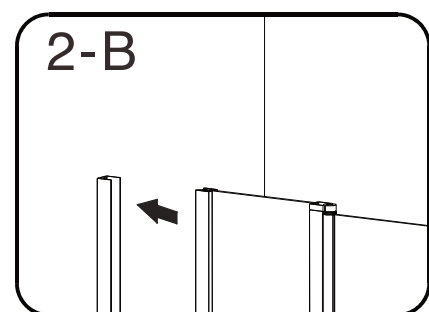
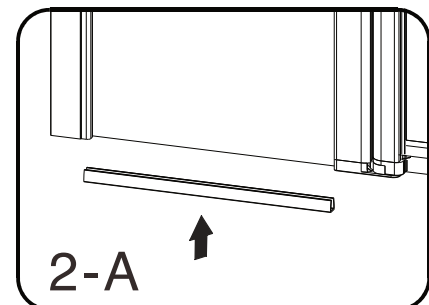
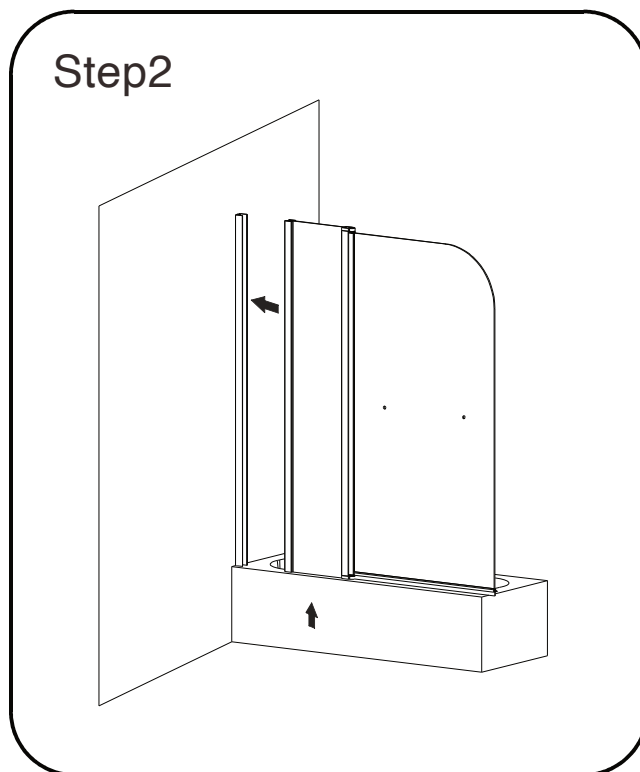
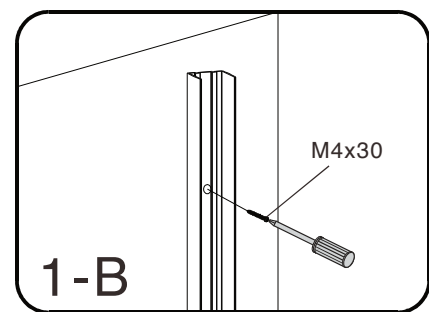
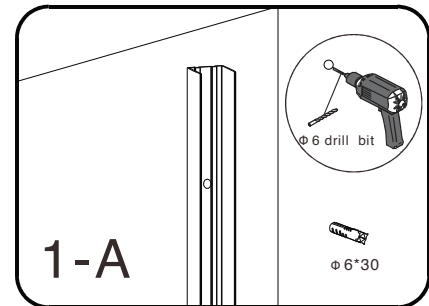
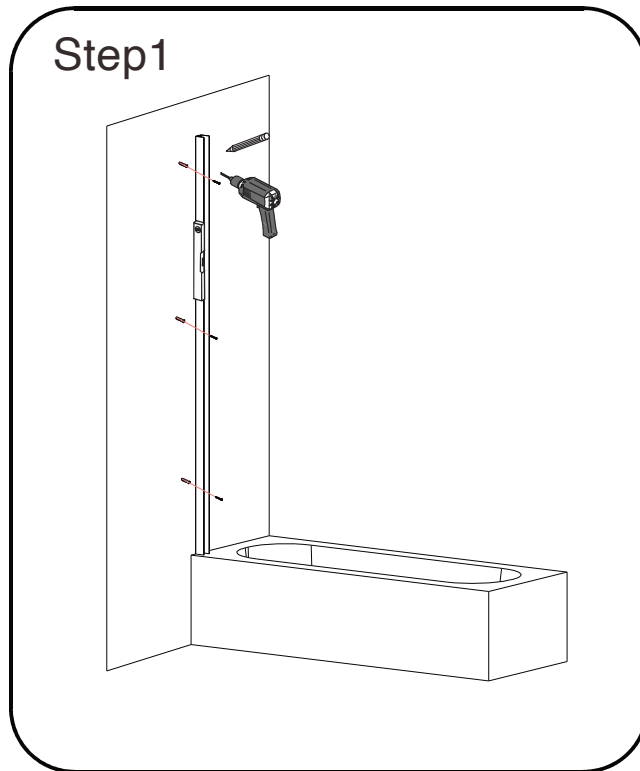


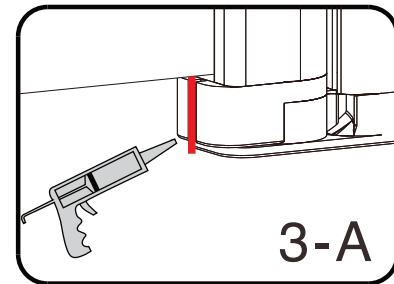
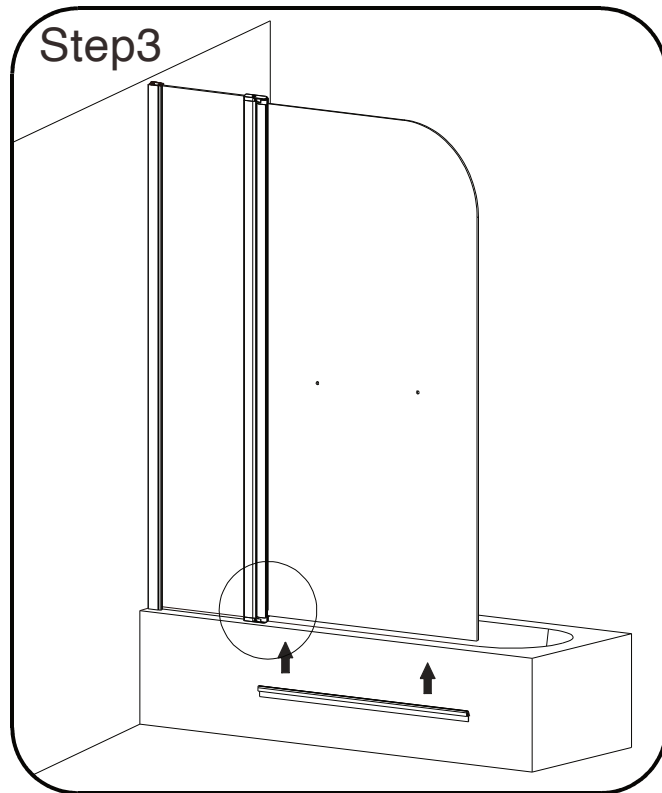


NO.	Description	Qty	NO.	Description	Qty
1	Wall Plugs	3	9	Bottom Longer Seals	1
2	Screws M4x30	5	10	Big Moving Glass Panel	1
3	Screws M4x10	3	11	Towel Rail	1
4	Wall Profile	1	12	Fixed Profile B	1
5	Screw Caps	3	13	Rotating Head	2
6	Fixed Profile A	1	14	End Caps	1
7	Bottom Shorter Seals	1	15	Small Fixed Glass Panel	1
8	Rotating Base	2	16	Support Bar	1

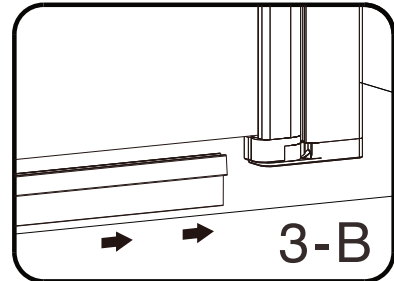


INSTALLATION STEPS

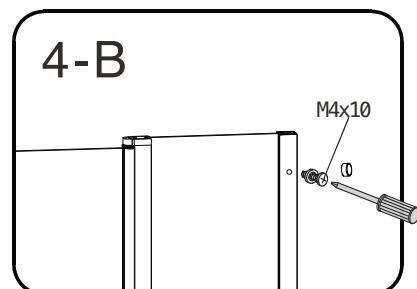
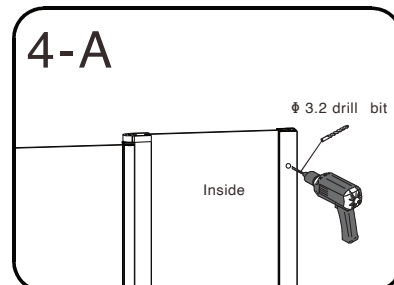
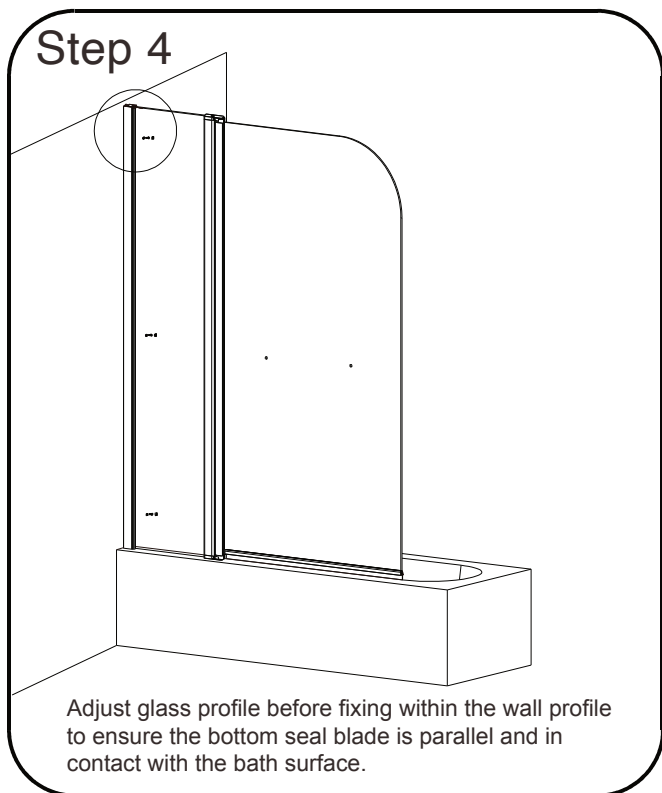
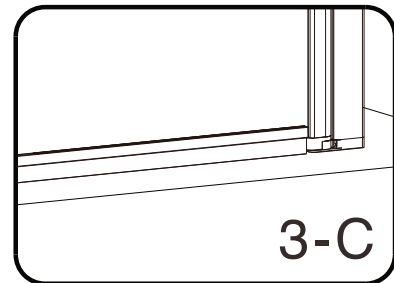


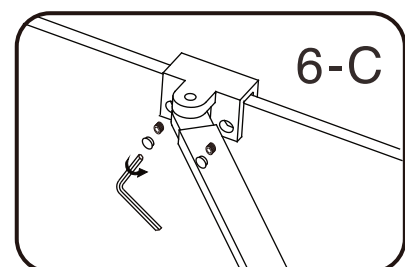
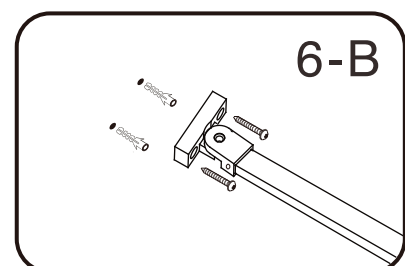
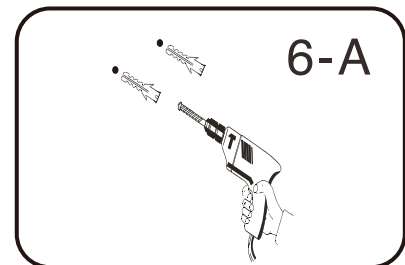
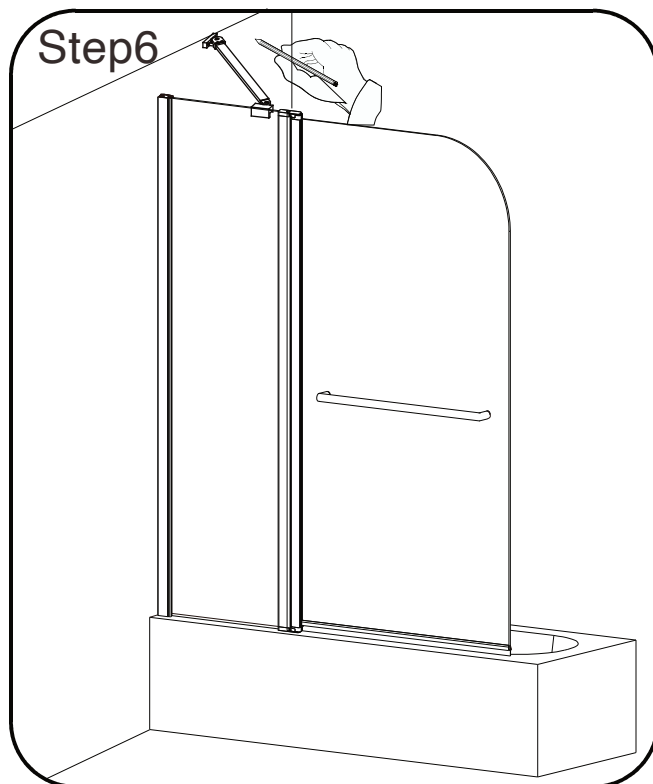
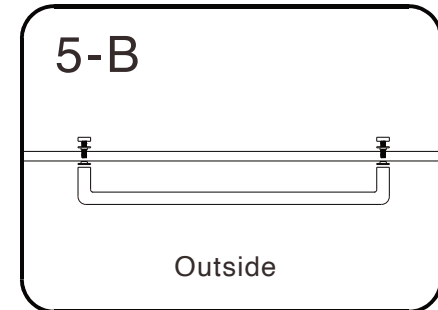
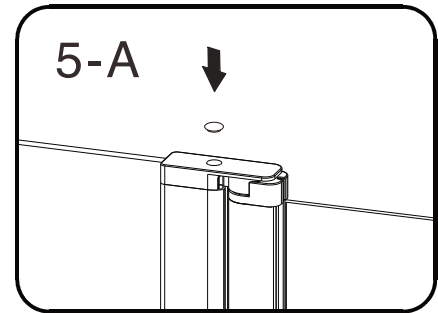
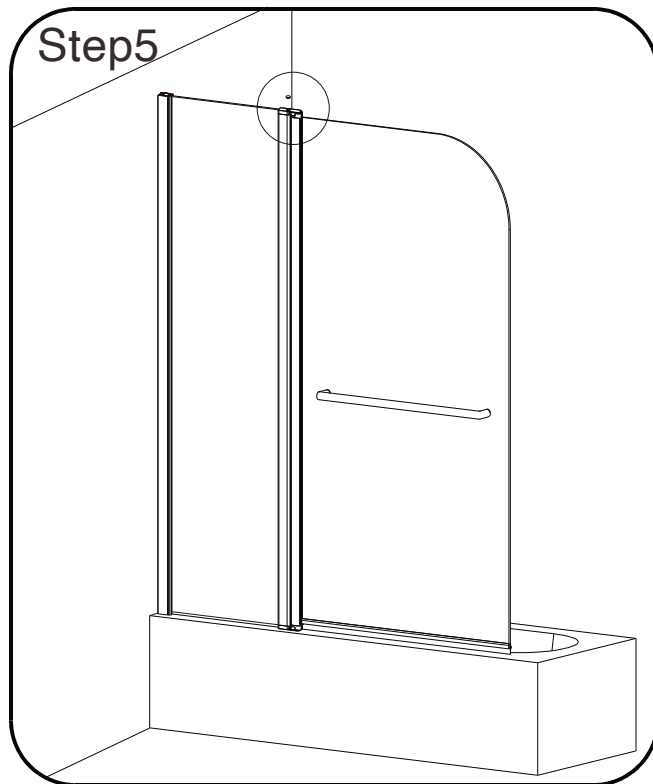


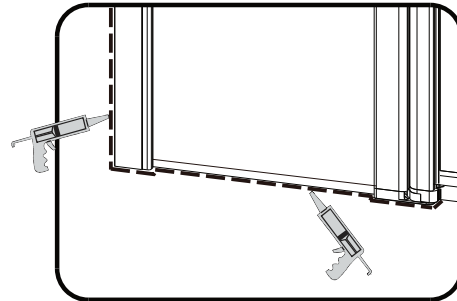
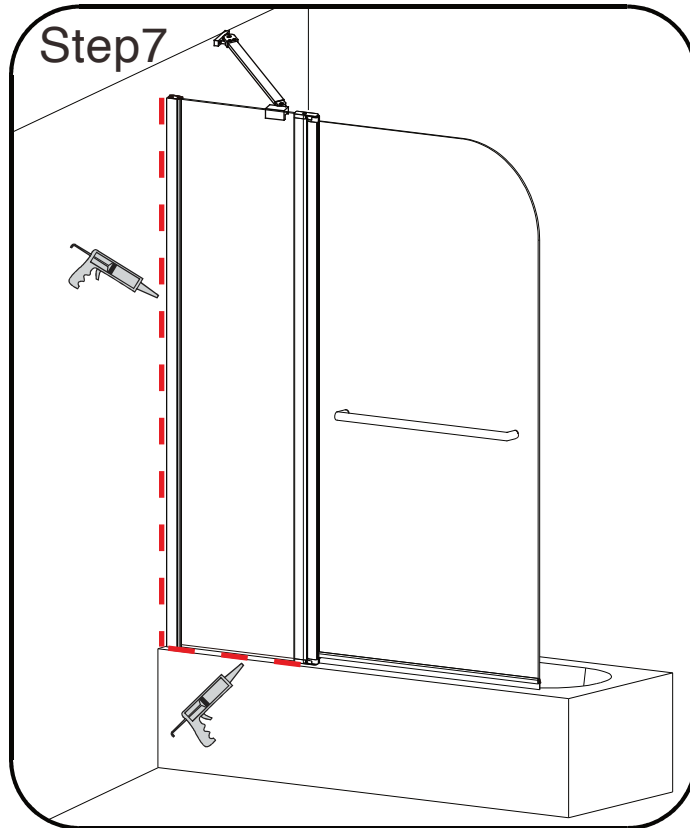
Silicone inside of the vertical slot before fitting the bottom seal strip.



Insert bottom blade onto the glass and into the pre siliconed slot.







Silicone outside only along profile contact with bath edge to meet the silicone in Step 3-A.



Allow 24 hours for silicone to dry before use.

Silicone on the outside edge only

NOTE any internal silicone application will invalidate your warranty.

