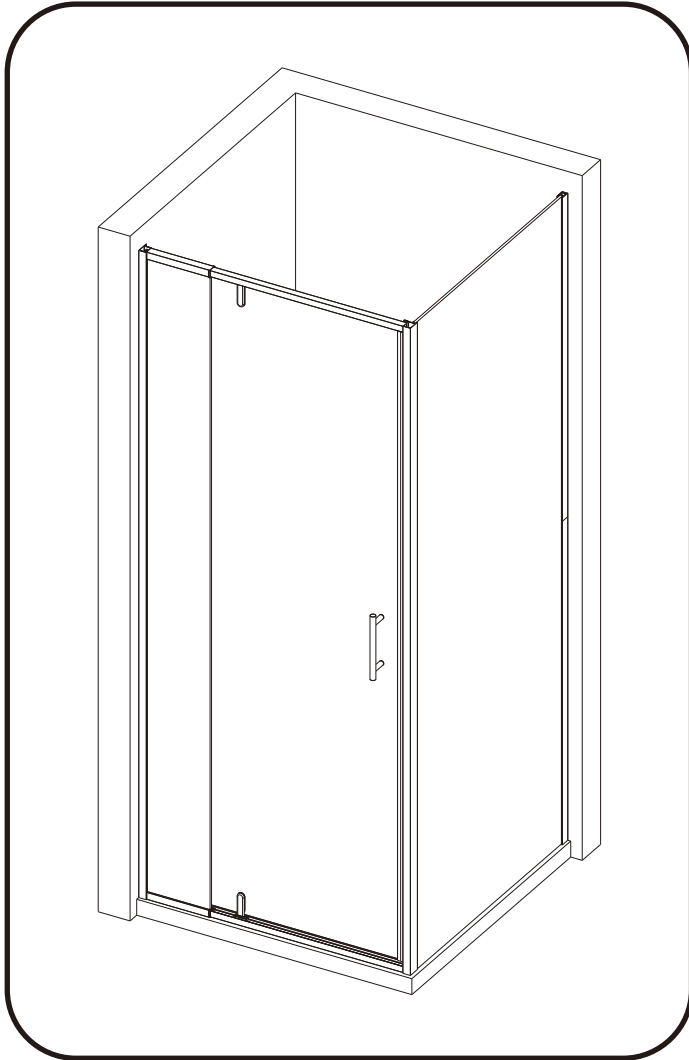


Meta Manual

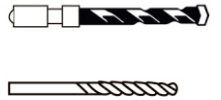
INSTALLATION INSTRUCTIONS



Tools Required



Drill



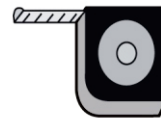
6mm Masonry Drill
3.2mm HSS Drill



Spirit level



Sealant Gun



Tape Measure



Pencil



**PH2 TYPE
Screwdriver**

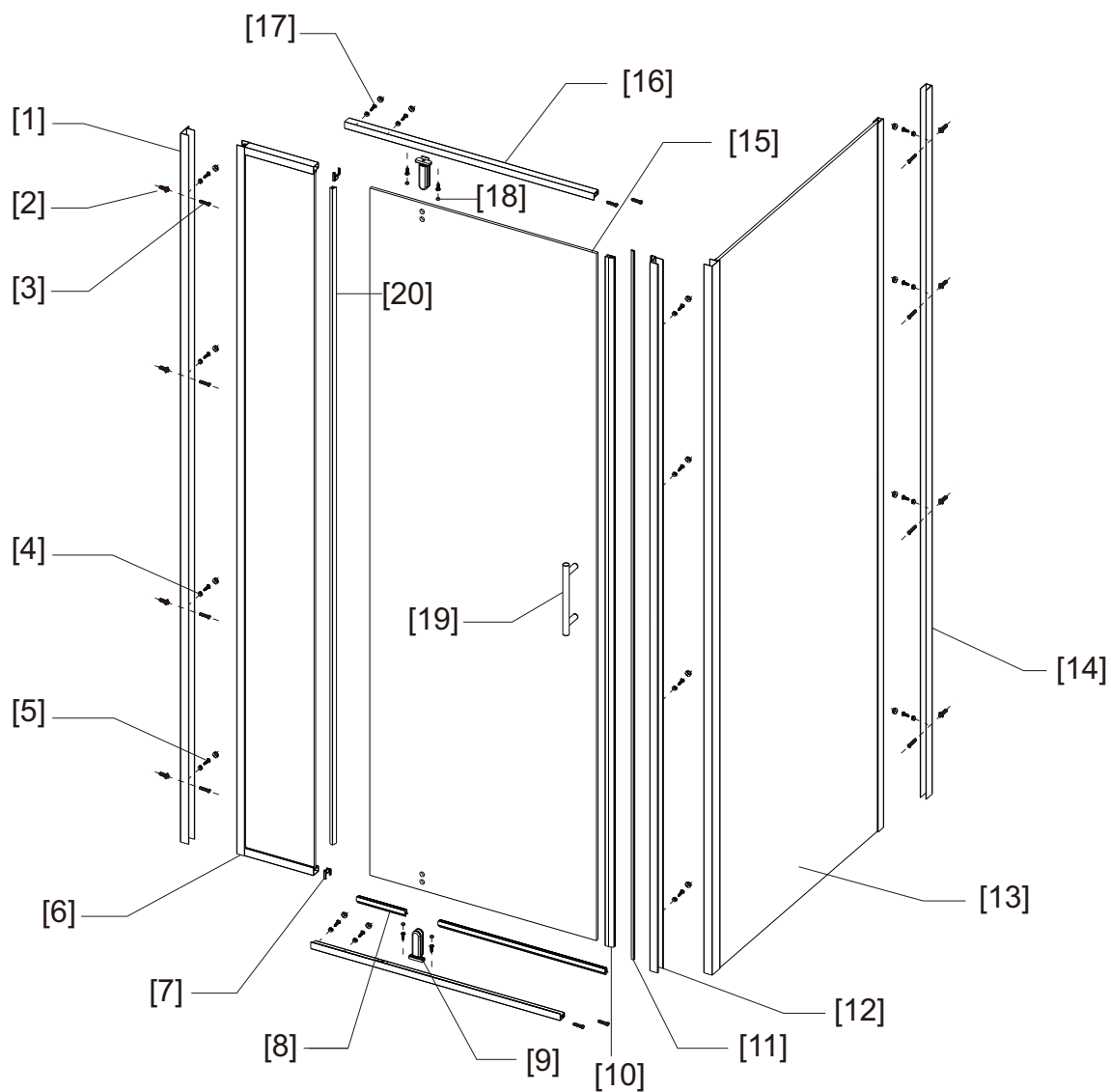
Please not hand tools **NOT** supplied.

IMPORTANT

These instructions assume that installation is done against solid/tiled walls.

The wall plugs supplied with the installation kit are for use on solid walls. Hollow or stud-partition walls will require alternative fixings. Please consult with a reputable trades person or hardware supplier for the correct type of fixing.

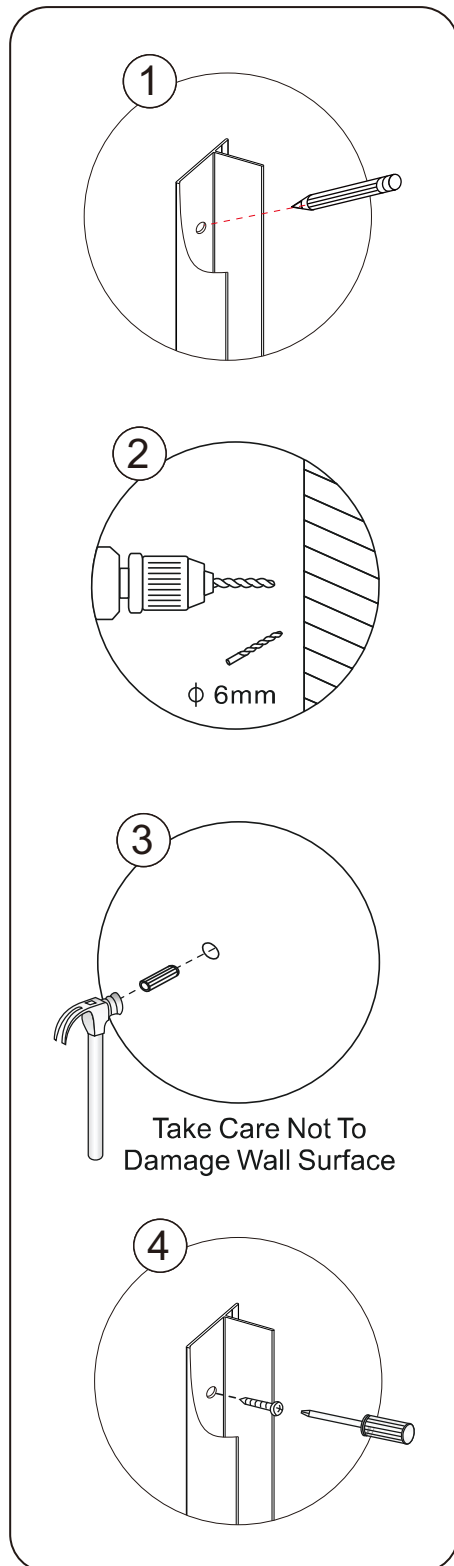
It may also be necessary to consult your tiling supplier about the correct method drilling your tiles.



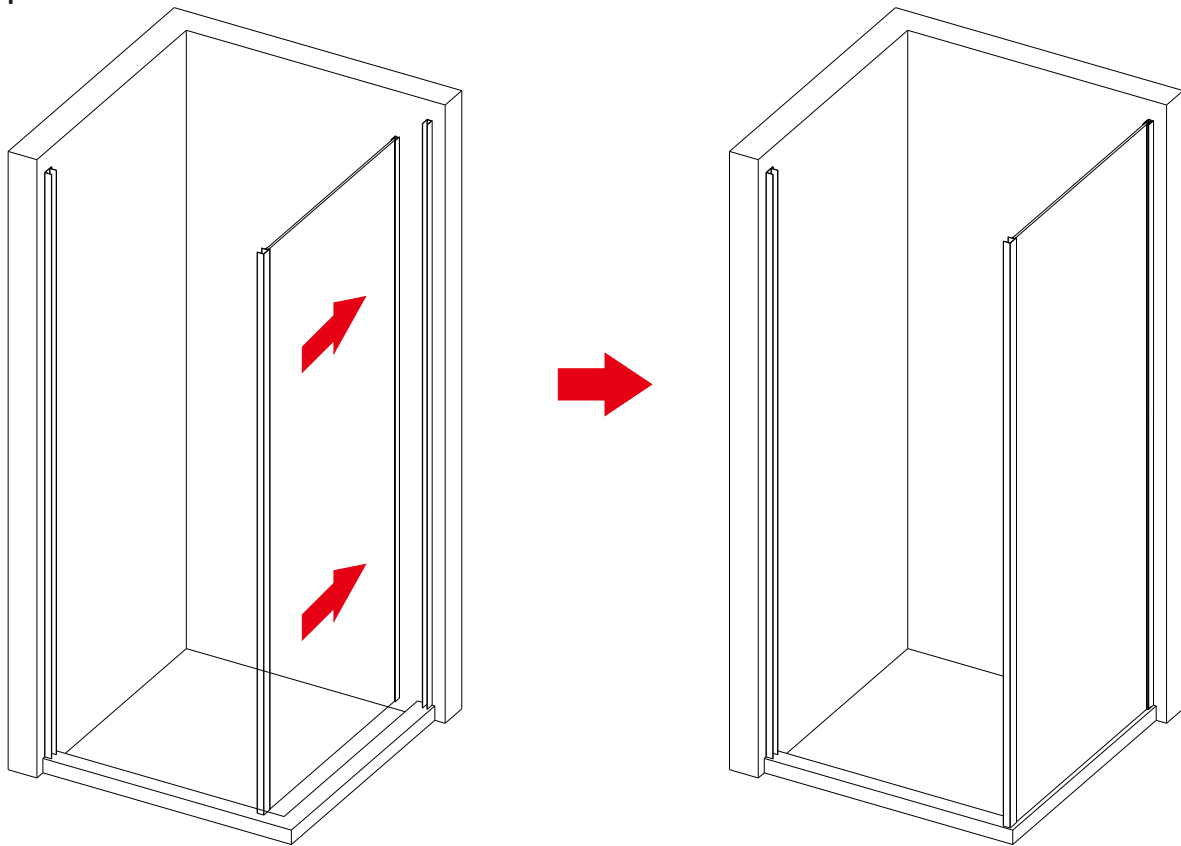
NO.	Description	Qty	NO.	Description	Qty
1	Wall Profile A	1	11	Magenetic Strip B	1
2	Expansion Sleeve	8	12	Wall Jamb	1
3	3.5*30 Screw	12	13	Side Fixed Door	1
4	Cover A + Cover B	16	14	Wall Profile B	1
5	4*10 Screw	16	15	Moving Door	1
6	Small fixed Door	1	16	Top Rail	2
7	Cover for Top Rail	2	17	4*8 Screw	4
8	Bottom Waterproof strip	2	18	Shaft Rotating Decorative Cover	4
9	Hinge	2	19	Handle	1
10	Magenetic Strip A	1	20	Waterproof strip	1

Installation Steps

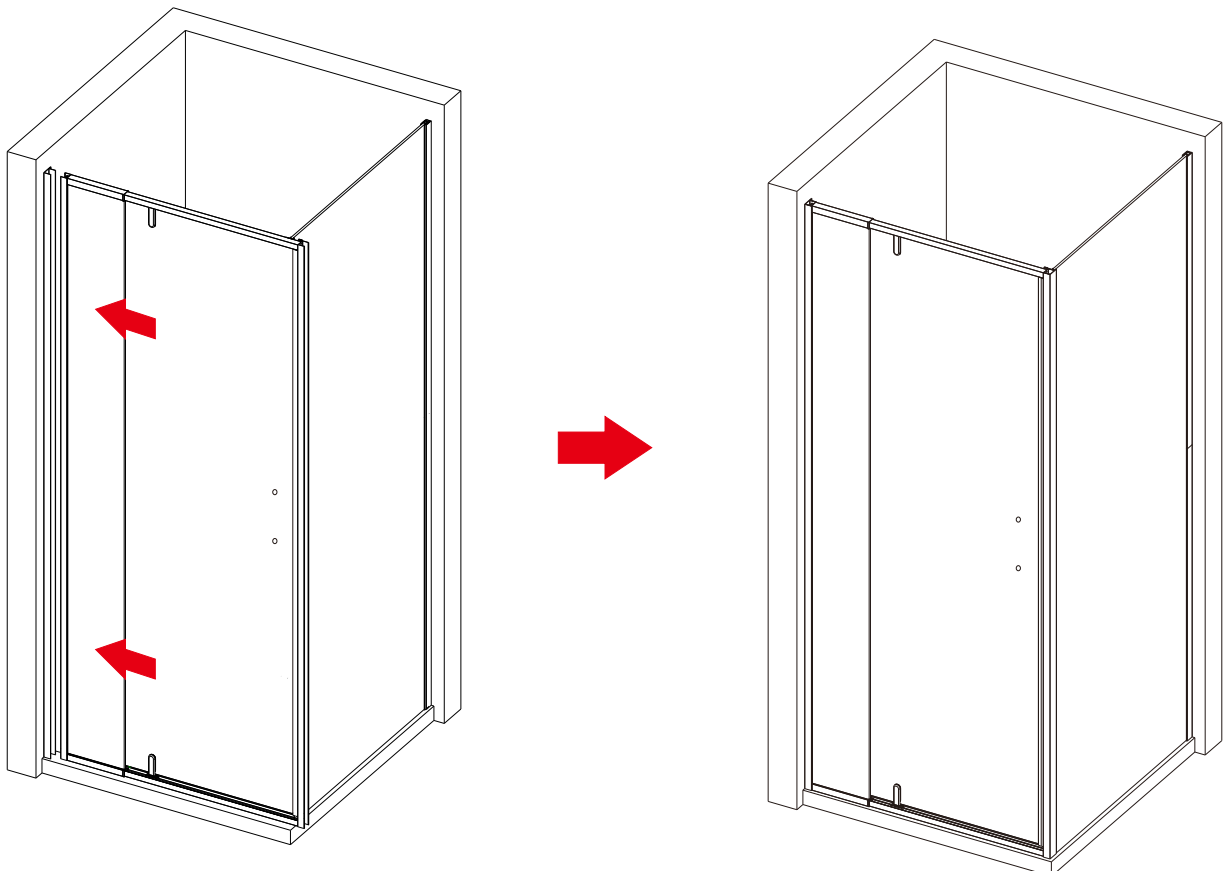
Step 1



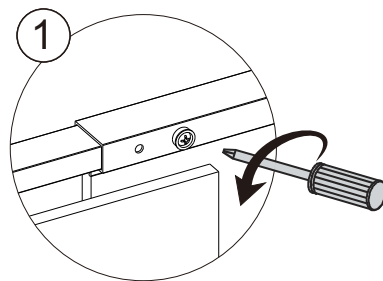
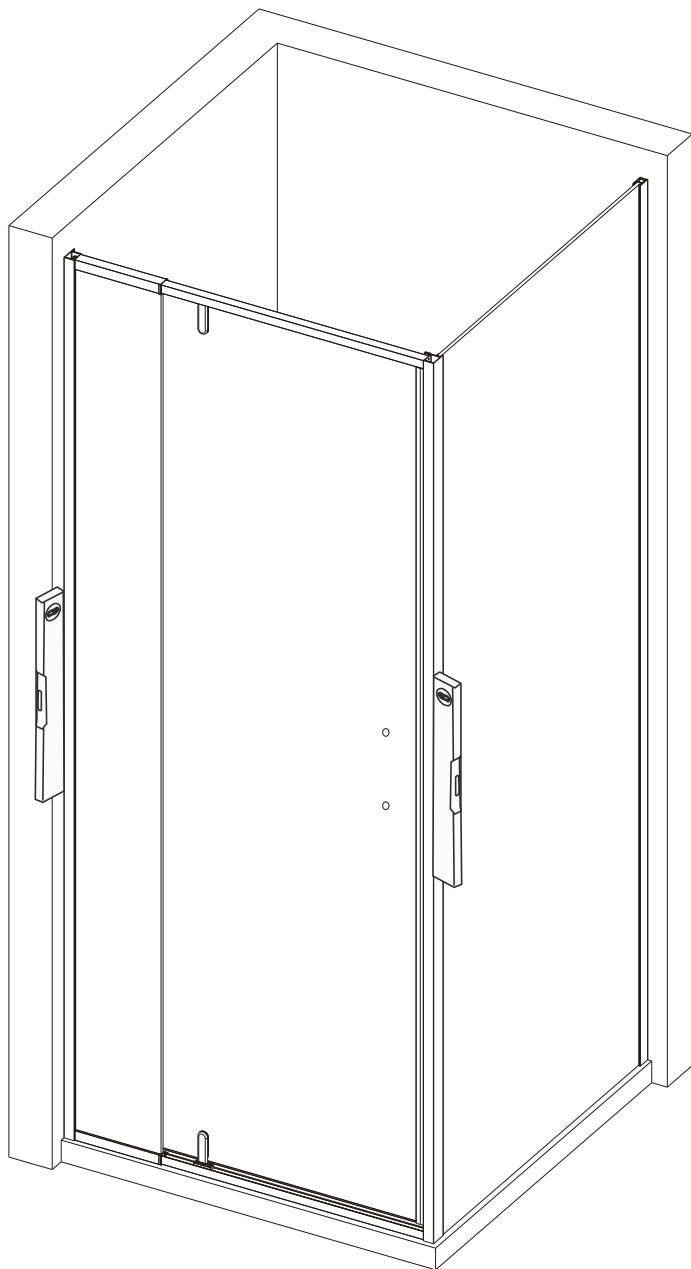
Step 2



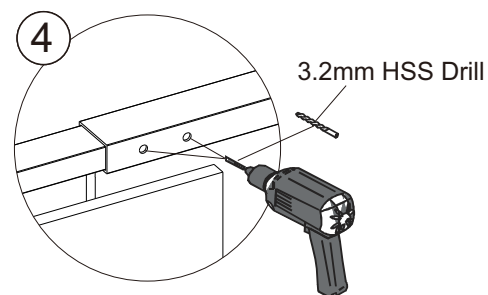
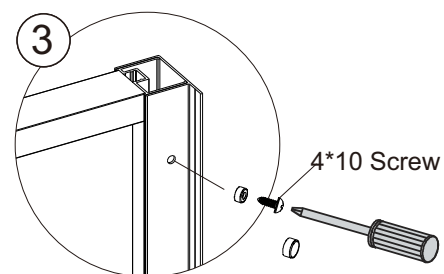
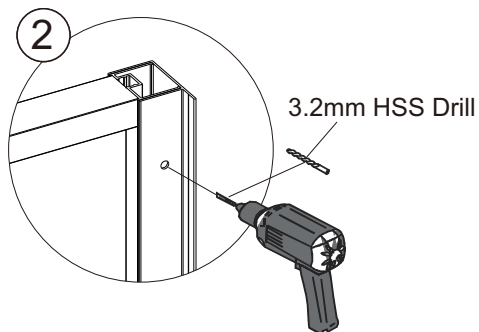
Step 3



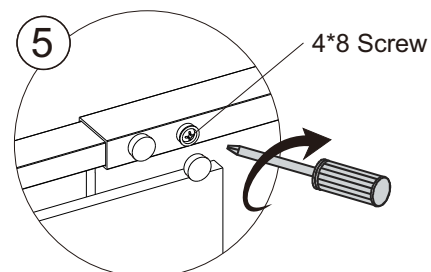
Step 3



Loosen the screws, and the telescopic guide rail can be adjusted in size.



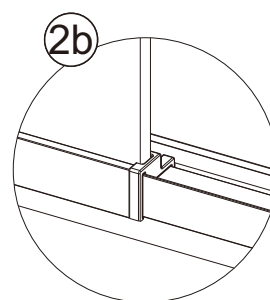
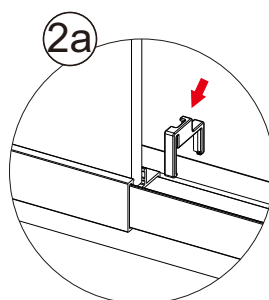
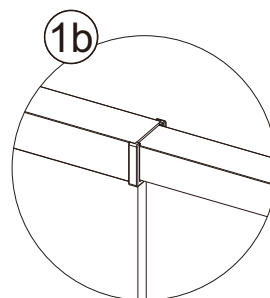
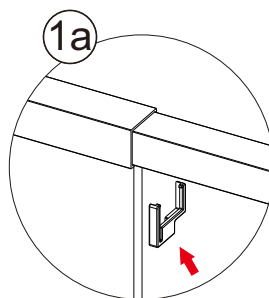
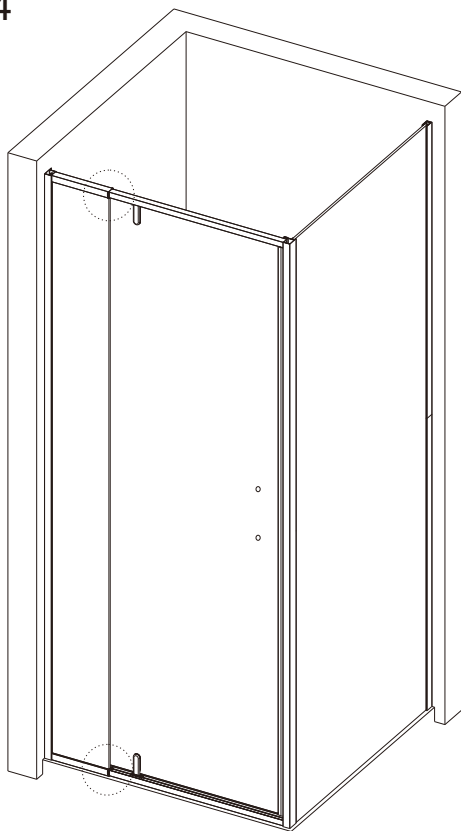
Drill Holes After Adjusting Size



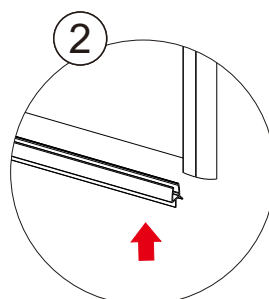
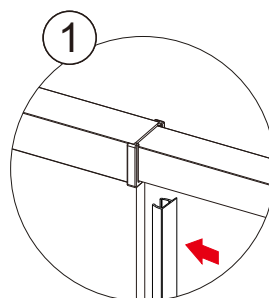
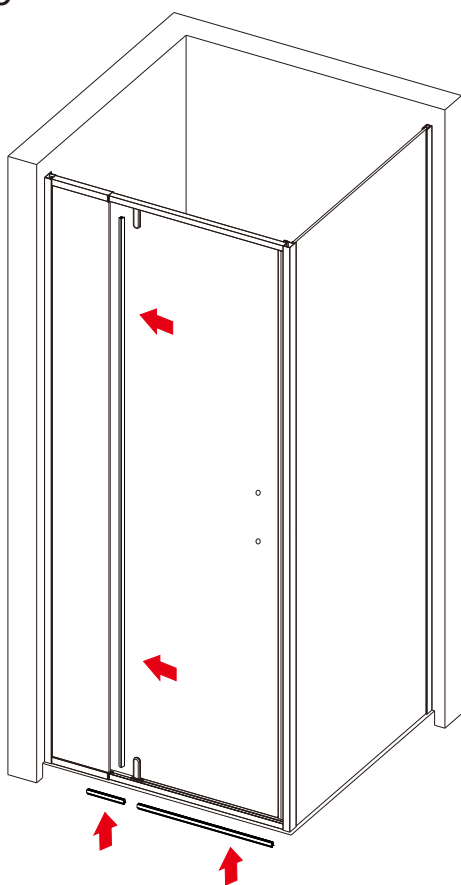
Finally, tighten the screws and fasten the decorative cover

Note: The installation steps require two people to complete. One person should hold the front panel of the telescopic door, and the other person should drill holes and screw in the screws.

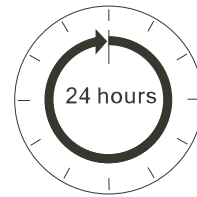
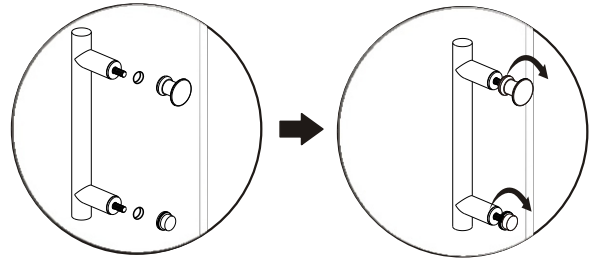
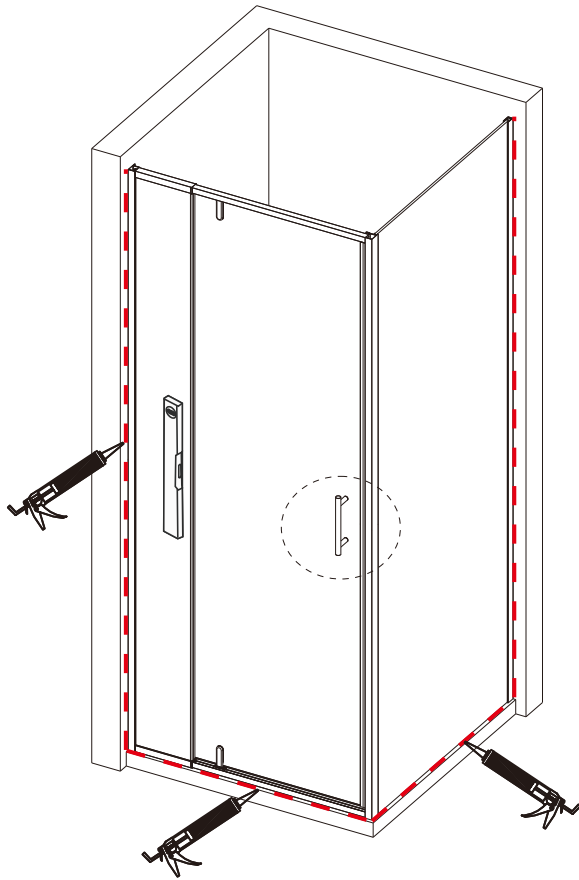
Step 4



Step 5



Step 6



Allow 24 hours for silicone to dry before use.

Silicone on the outside edge only