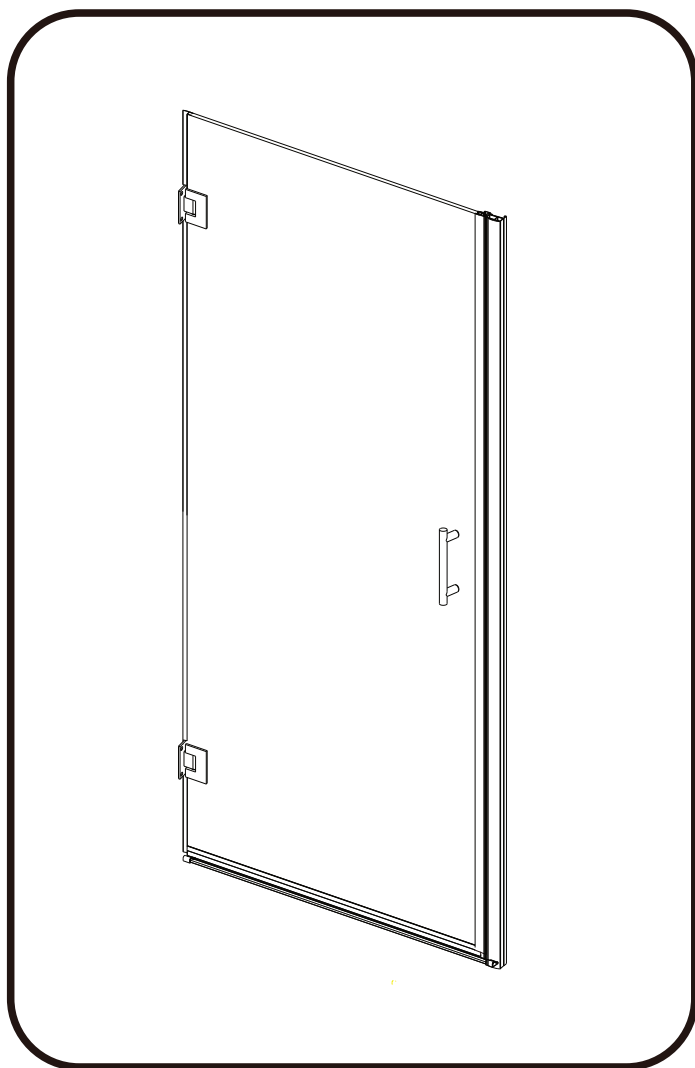


INSTALLATION INSTRUCTIONS



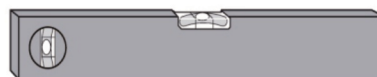
Tools Required



Drill



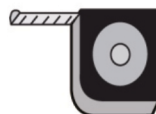
6mm Masonry Drill
3.2mm HSS Drill



Spirit level



Sealant Gun



Tape Measure



Pencil



**PH2 TYPE
Screwdriver**

Please not hand tools NOT supplied.

IMPORTANT

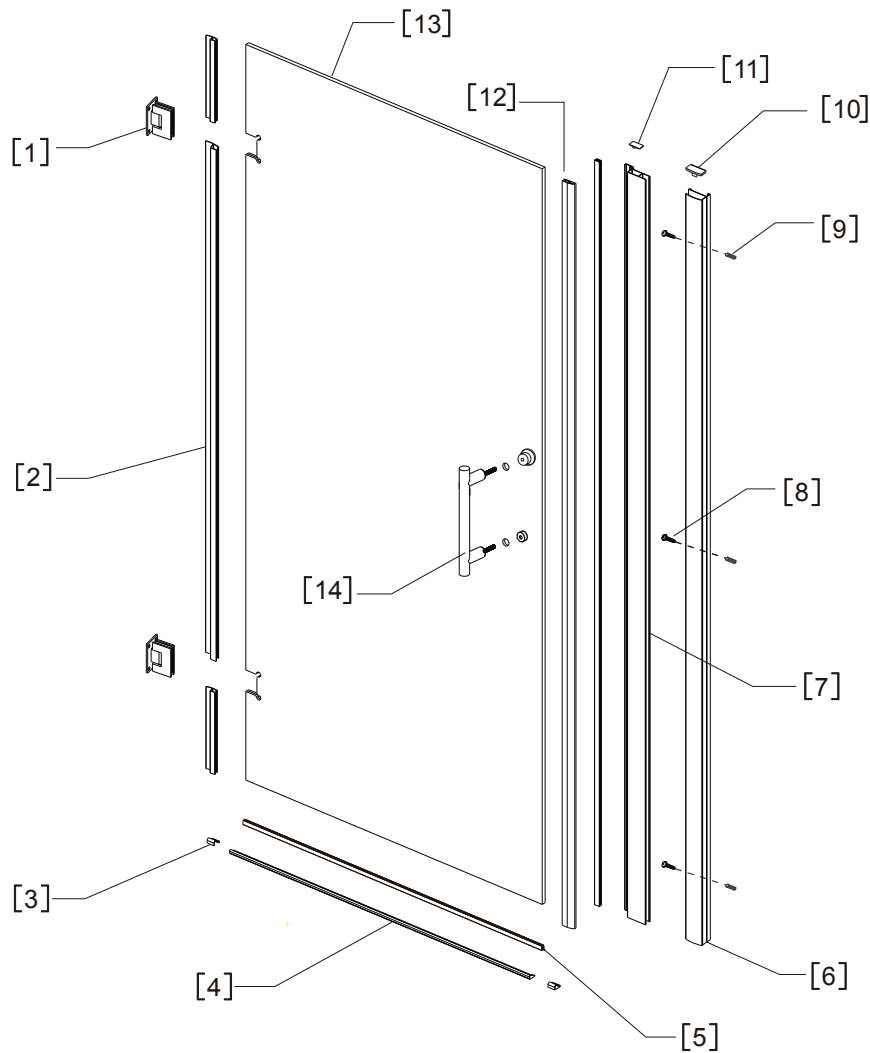
These instructions assume that installation is done against solid/tiled walls.

The wall plugs supplied with the installation kit are for use on solid walls. Hollow or stud-partition walls will require alternative fixings. Please consult with a reputable trades person or hardware supplier for the correct type of fixing.

It may also be necessary to consult your tiling supplier about the correct method drilling your tiles.



Assembly Drawing

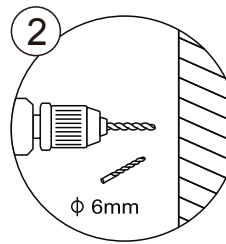
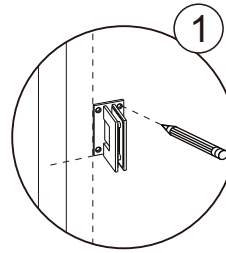
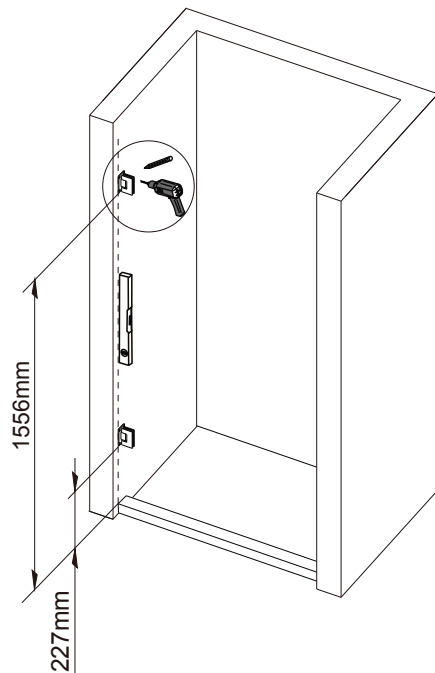


NO.	Description	Qty	NO.	Description	Qty
1	Hinge	2	8	3.5*30 Screw	3
2	Waterproof PVC Strip	1	9	Expansion Sleeve	3
3	Cover	2	10	Wall Profile Cover	1
4	Aluminum Strip	1	11	Wall Jamb Cover	1
5	PVC Strip	1	12	Magenetic Strip	2
6	Wall Profile	1	13	Glass Door	1
7	Wall Jamb	1	14	Handle	1

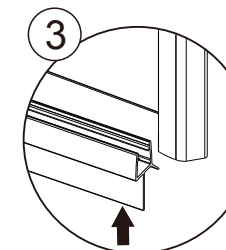
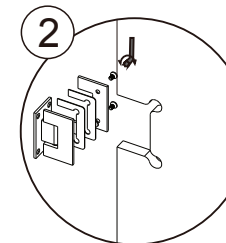
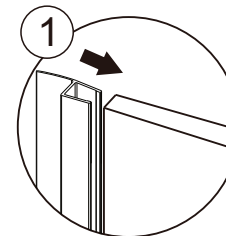
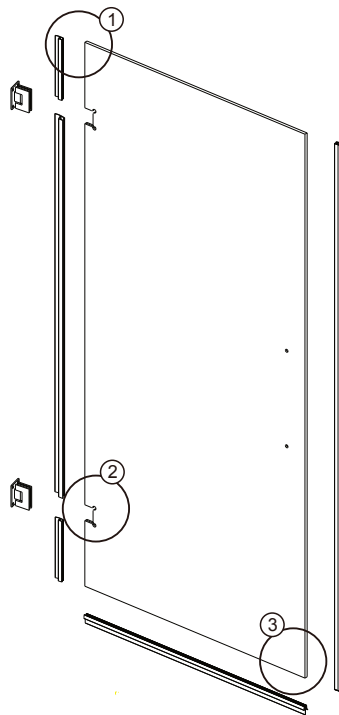


INSTALLATION STEPS

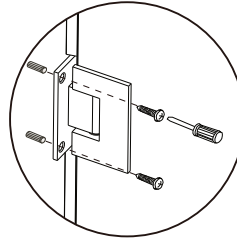
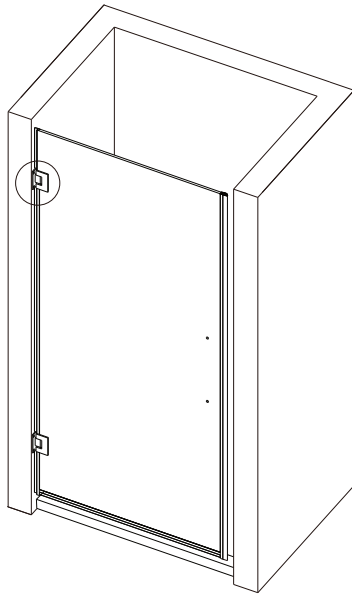
Step1



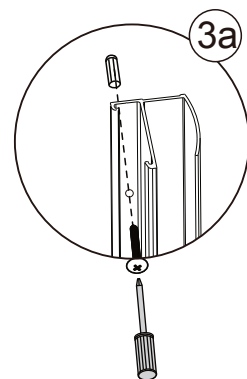
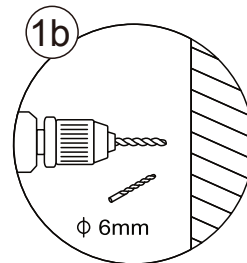
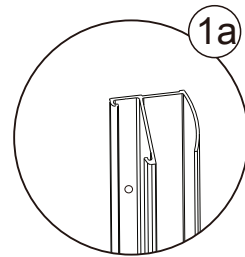
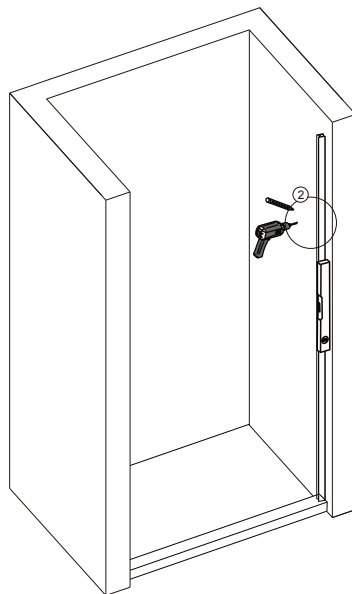
Step2



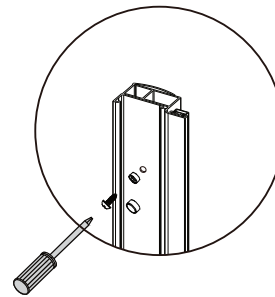
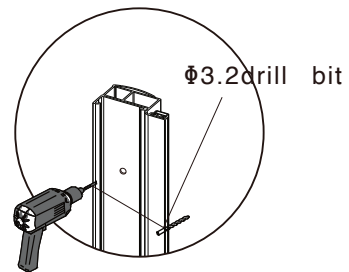
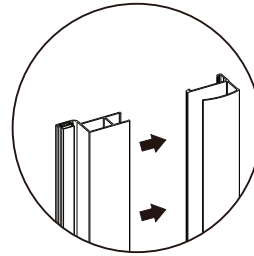
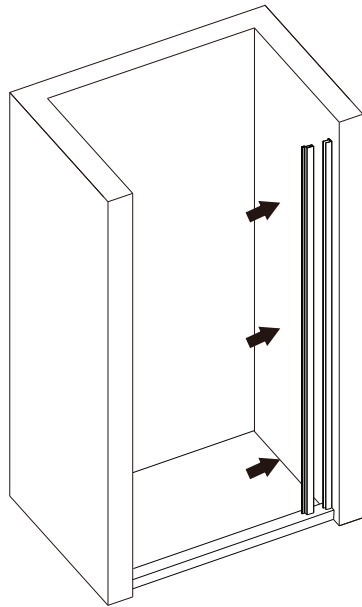
Step3



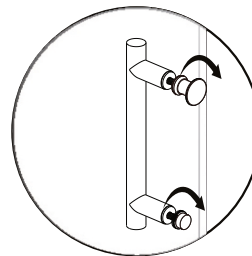
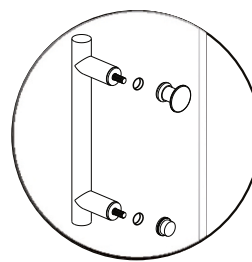
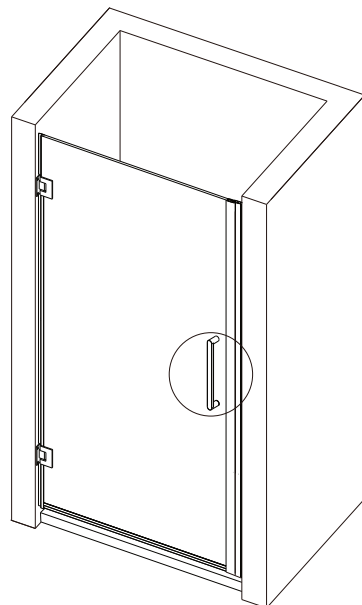
Step4



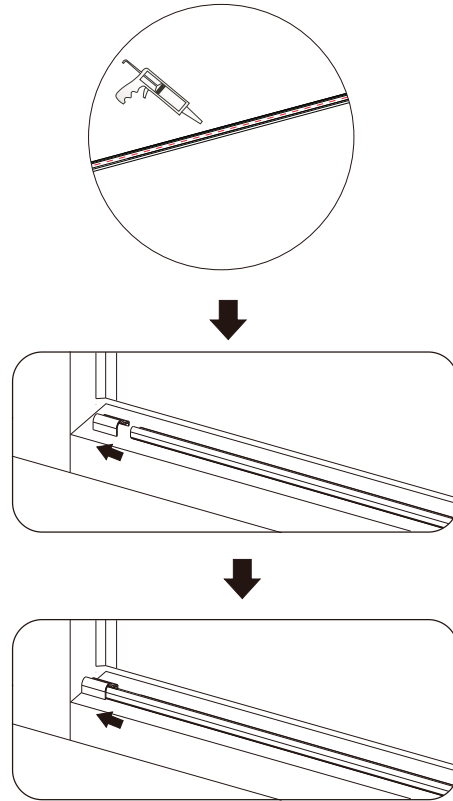
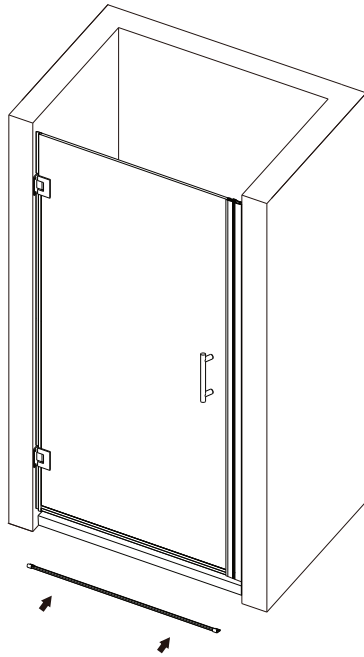
Step5



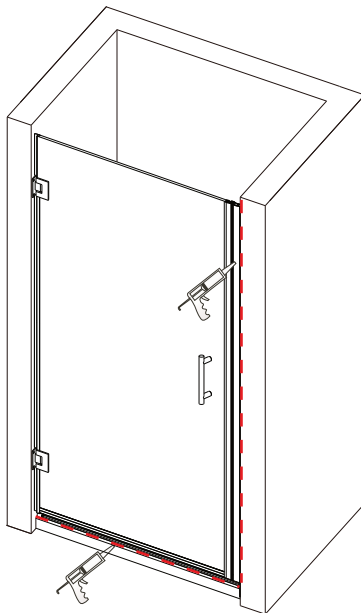
Step6



Step7



Step8



Allow 24 hours for silicone to dry before use.

Silicone on the outside edge only

