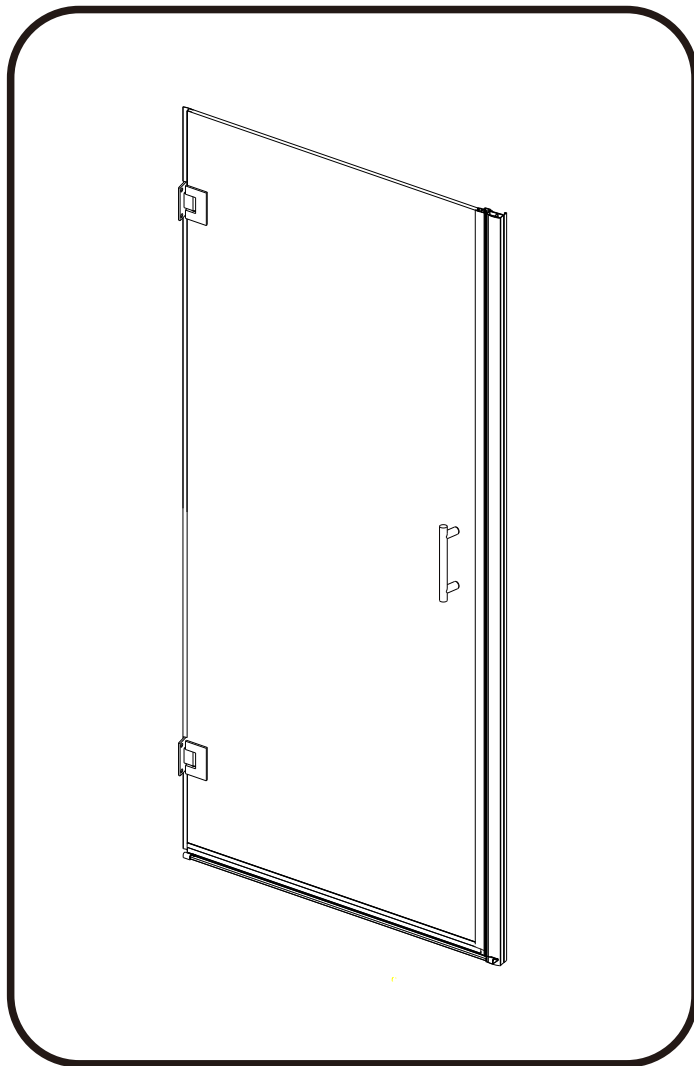


Model No:Beluga

Pivot Door

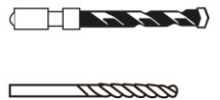
INSTALLATION INSTRUCTIONS



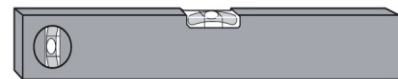
Tools Required



Drill



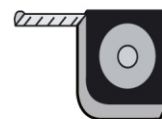
6mm Masonry Drill
3.2mm HSS Drill



Spirit level



Sealant Gun



Tape Measure



Pencil



**PH2 TYPE
Screwdriver**

Please not hand tools **NOT** supplied.

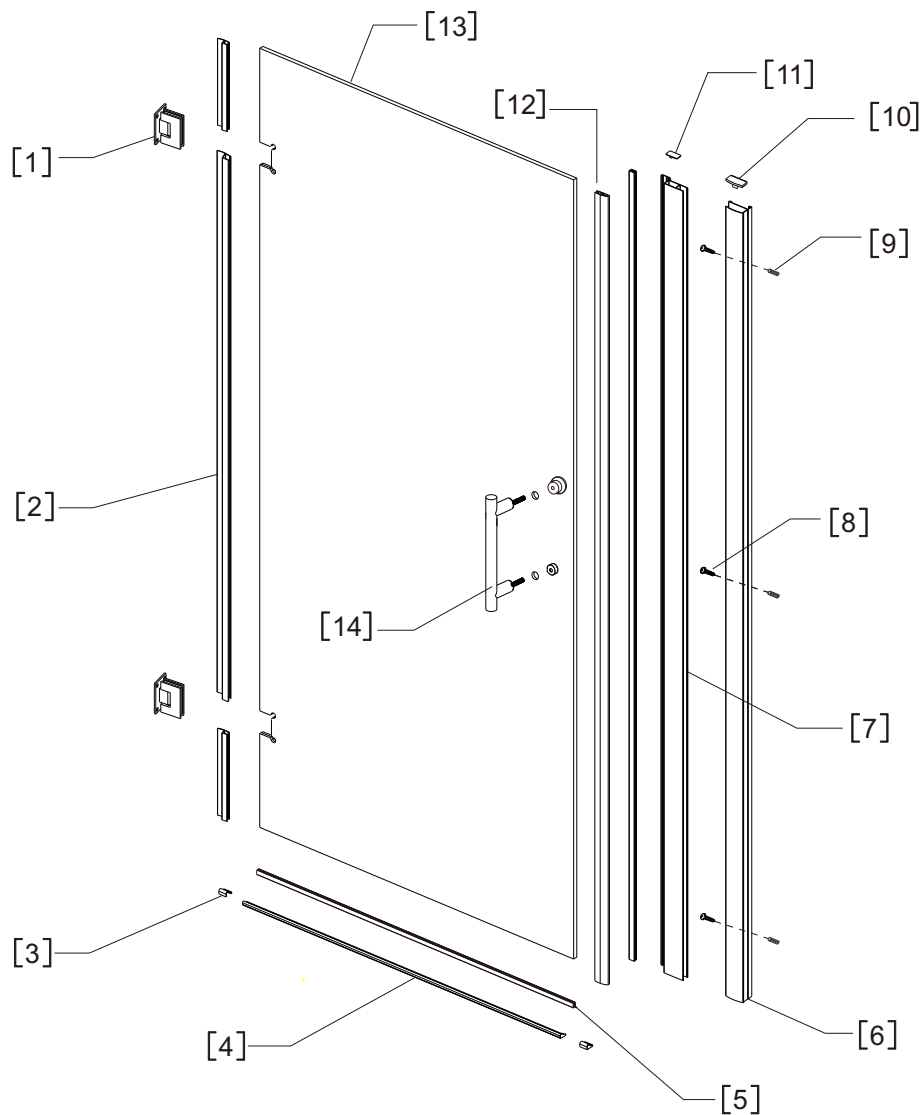
IMPORTANT

These instructions assume that installation is done against solid/tiled walls.

The wall plugs supplied with the installation kit are for use on solid walls. Hollow or stud-partition walls will require alternative fixings. Please consult with a reputable trades person or hardware supplier for the correct type of fixing.

It may also be necessary to consult your tiling supplier about the correct method drilling your tiles.

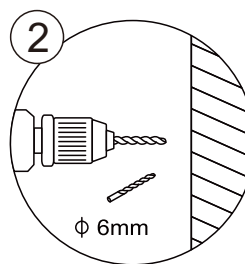
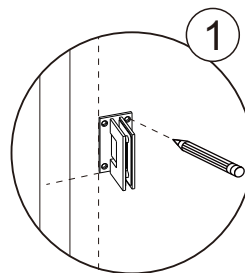
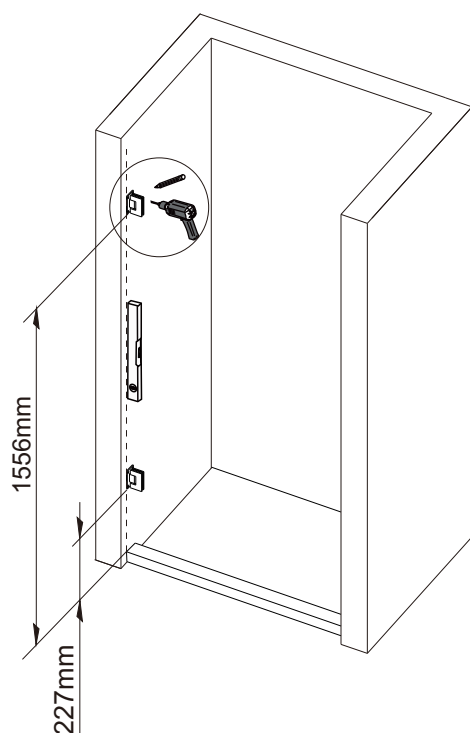
◆ Assembly Drawing



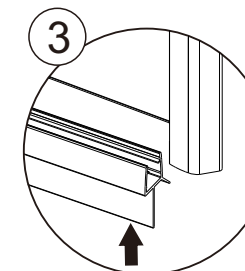
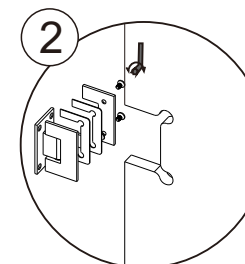
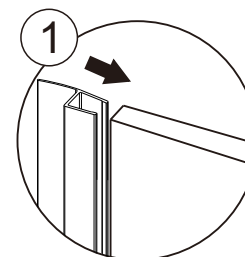
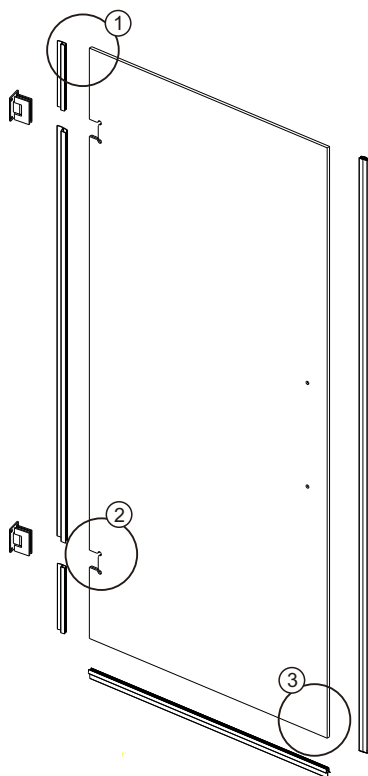
NO.	Description	Qty	NO.	Description	Qty
1	Hinge	2	8	3.5*30 Screw	3
2	Waterproof PVC Strip	1	9	Expansion Sleeve	3
3	Cover	2	10	Wall Profile Cover	1
4	Aluminum Strip	1	11	Wall Jamb Cover	1
5	PVC Strip	1	12	Magenetic Strip	2
6	Wall Profile	1	13	Glass Door	1
7	Wall Jamb	1	14	Handle	1

◆ Installation steps:

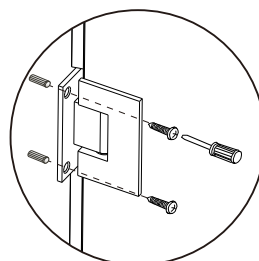
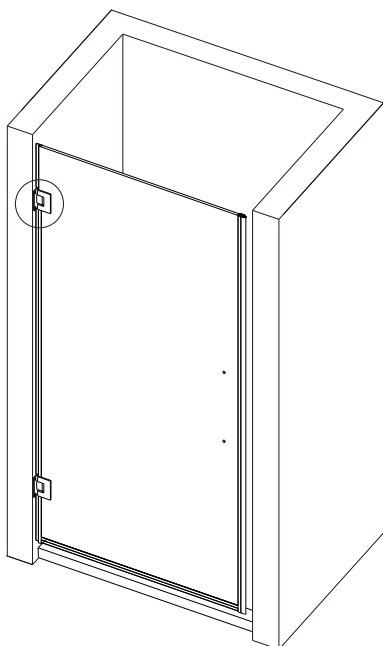
Step1



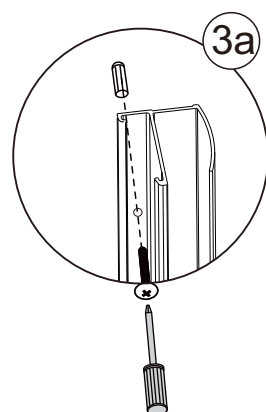
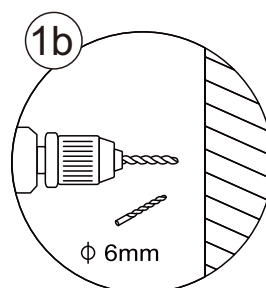
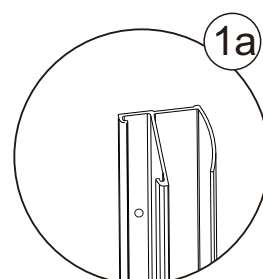
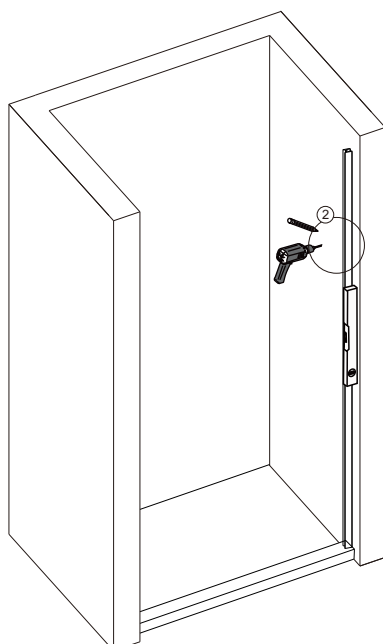
Step2



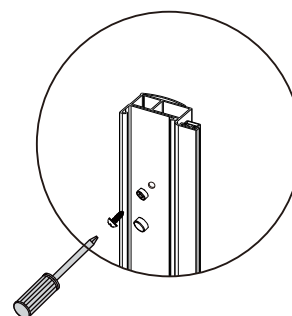
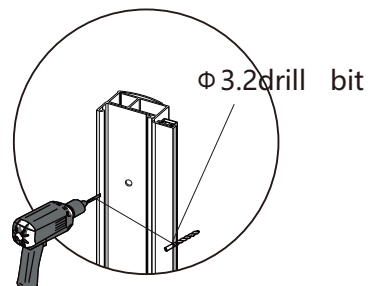
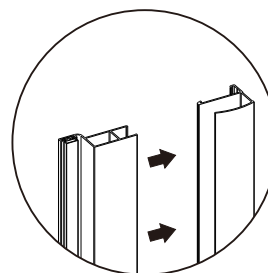
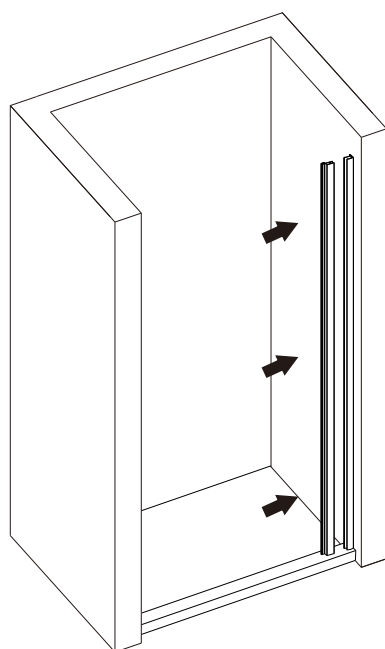
Step3



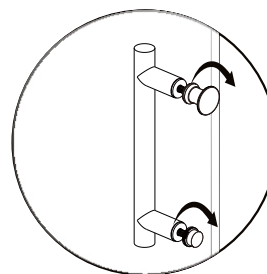
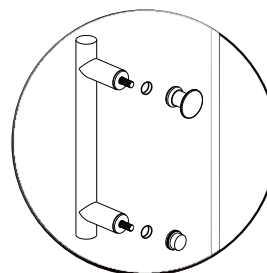
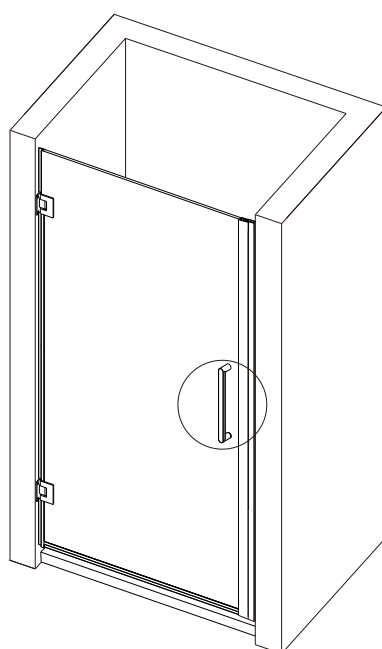
Step4



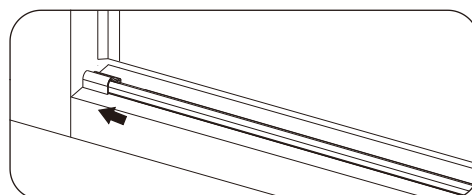
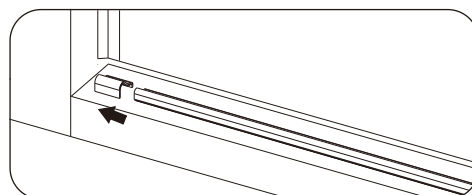
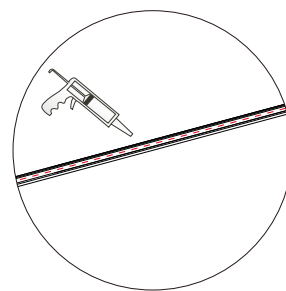
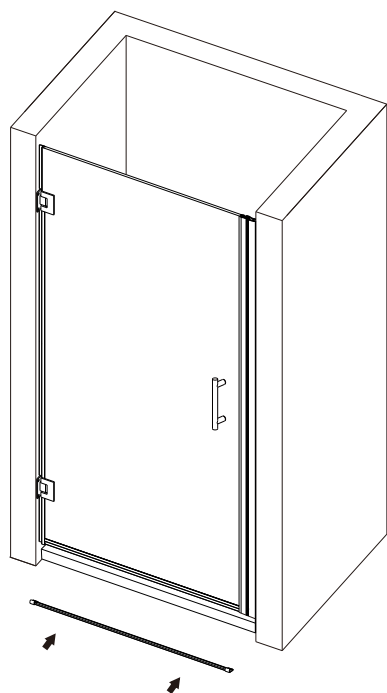
Step5



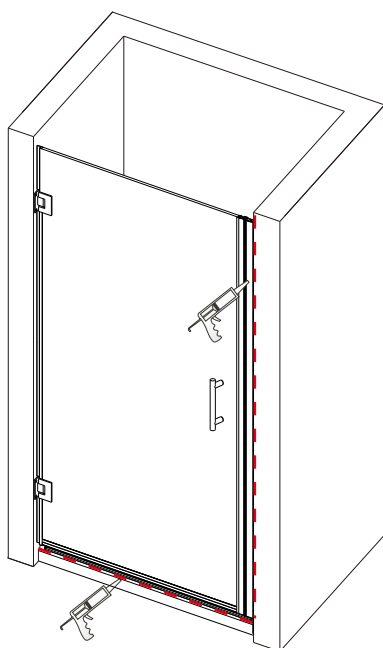
Step6



Step7



Step8



Allow 24 hours for silicone to dry before use.

Silicone on the outside edge only