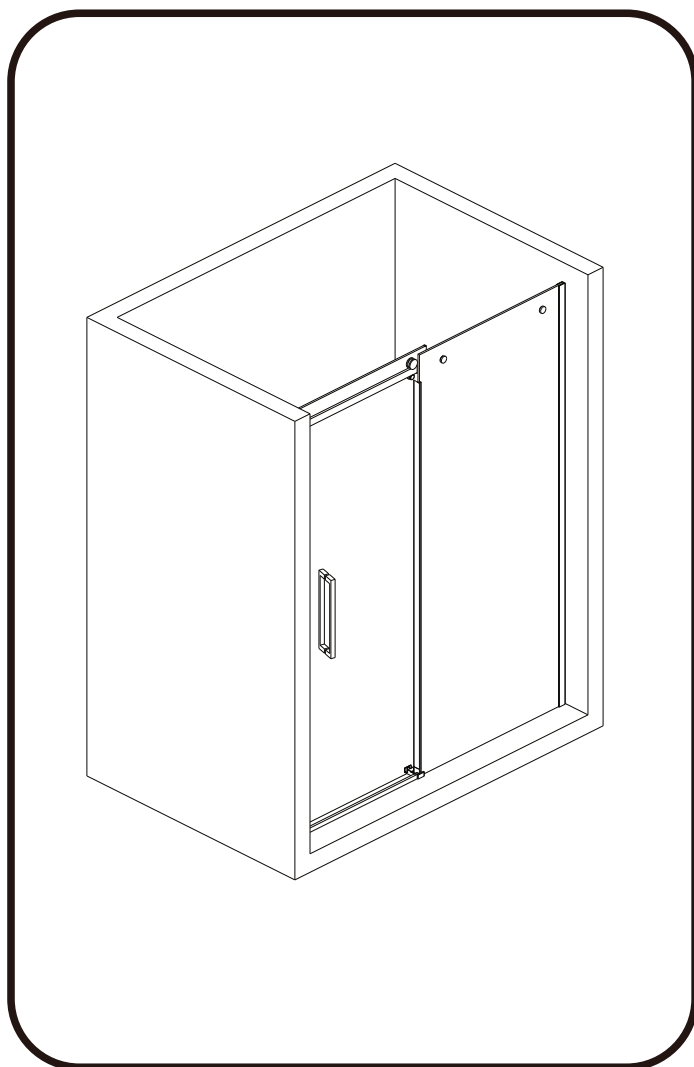


## INSTALLATION INSTRUCTIONS



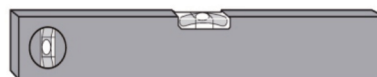
### Tools Required



**Drill**



6mm Masonry Drill  
3.2mm HSS Drill



**Spirit level**



**Sealant Gun**



**Tape Measure**



**Pencil**



**PH2 TYPE  
Screwdriver**

Please not hand tools NOT supplied.

## IMPORTANT

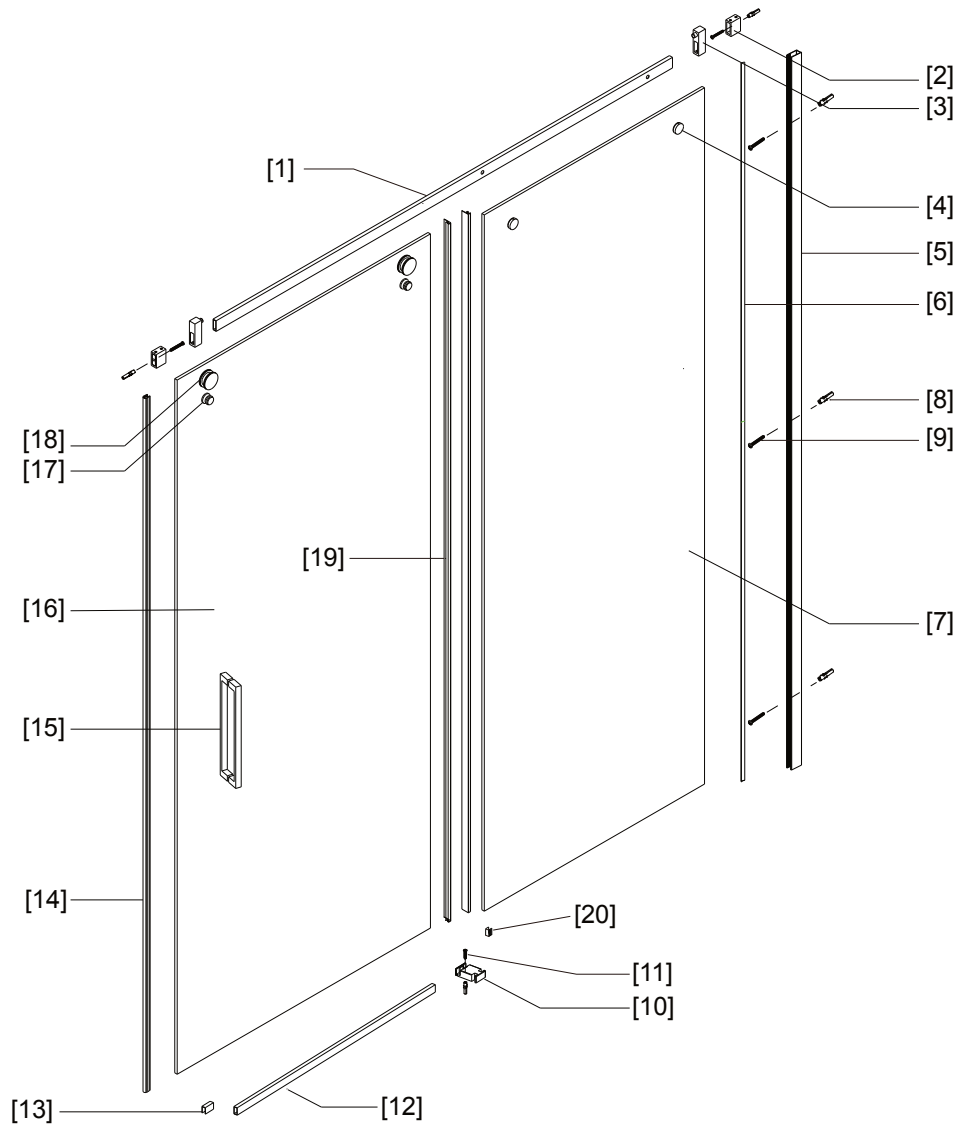
These instructions assume that installation is done against solid/tiled walls.

The wall plugs supplied with the installation kit are for use on solid walls. Hollow or stud-partition walls will require alternative fixings. Please consult with a reputable trades person or hardware supplier for the correct type of fixing.

It may also be necessary to consult your tiling supplier about the correct method drilling your tiles.



# MODEL : LWIDGI (WITH SIDE PANEL)

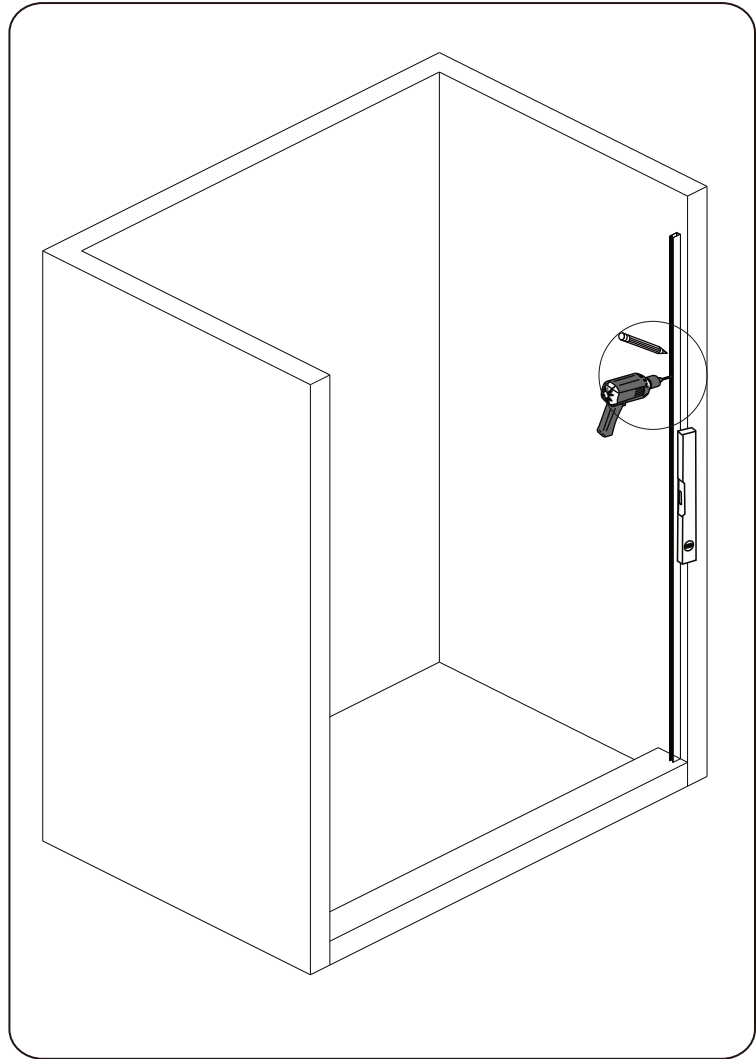
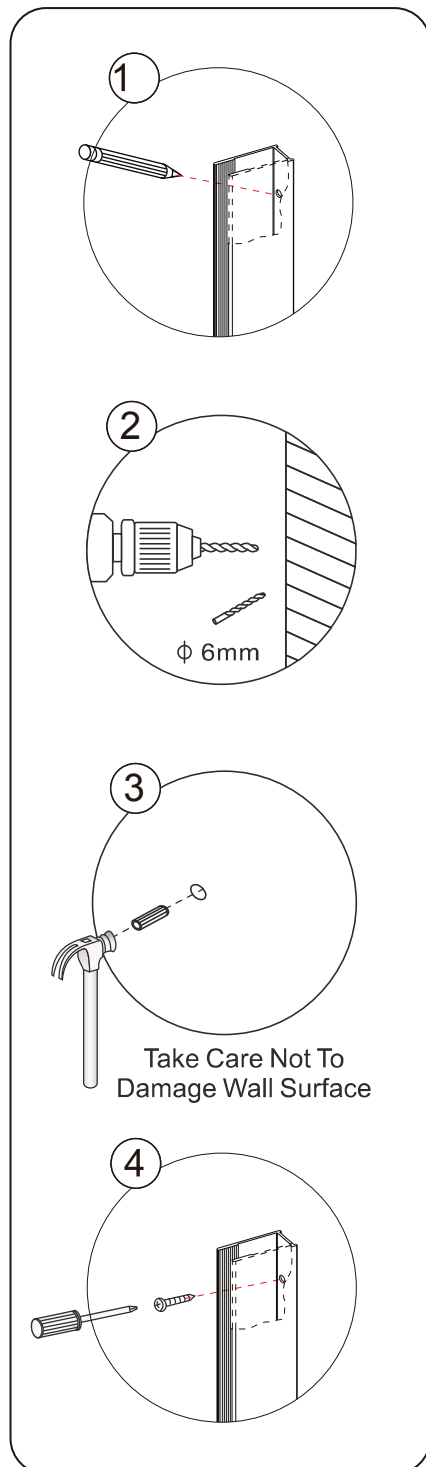


NO.	Description	Qty	NO.	Description	Qty
1	Square tube guide rail	1	11	4*30 Self tapping screw	1
2	Wall base	2	12	Blocking aluminum	1
3	Anti-collision component	2	13	Decorative coverB	2
4	fixed block	2	14	Bubble rubber strip	1
5	Wall profile	1	15	Handle	1
6	Single sided adhesive strip	1	16	Moving Glass	1
7	Fixed glass	1	17	Anti jump component	2
8	Expansion sleeve	4	18	Roller	2
9	4*30 Self tapping screw	3	19	waterproof strip	2
10	Bottom slider	1	20	U-Shaped Rubber Strip	1



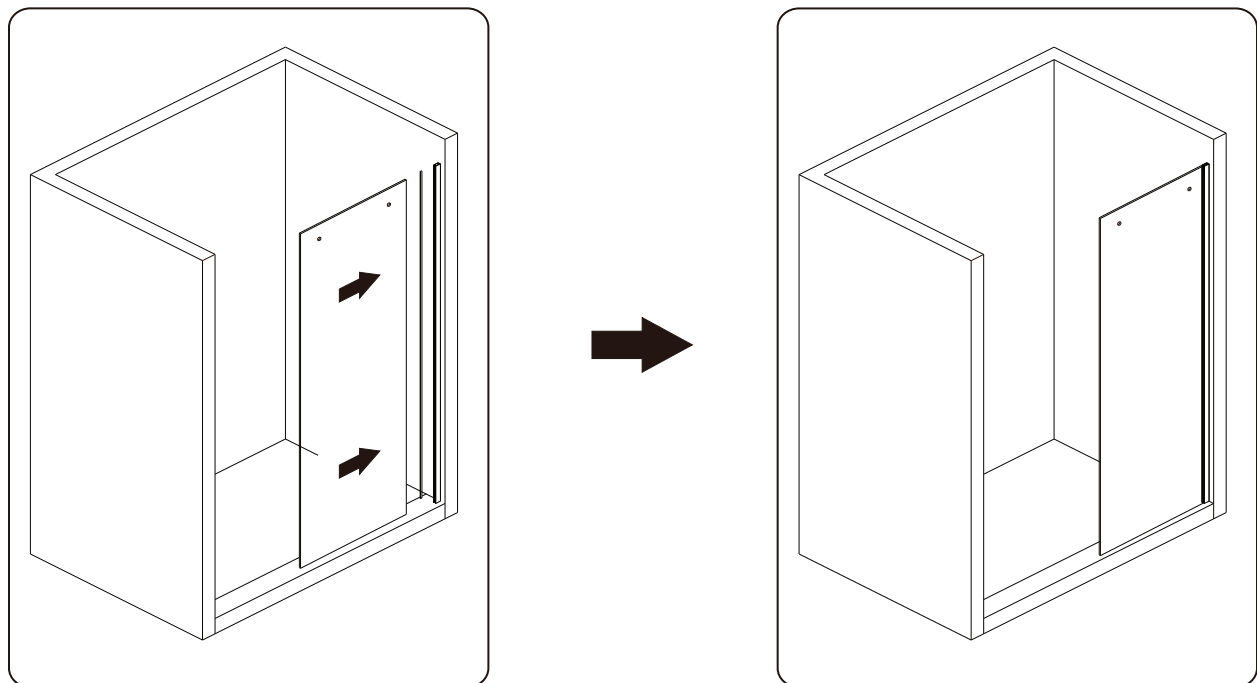
## INSTALLATION STEPS

### Step 1

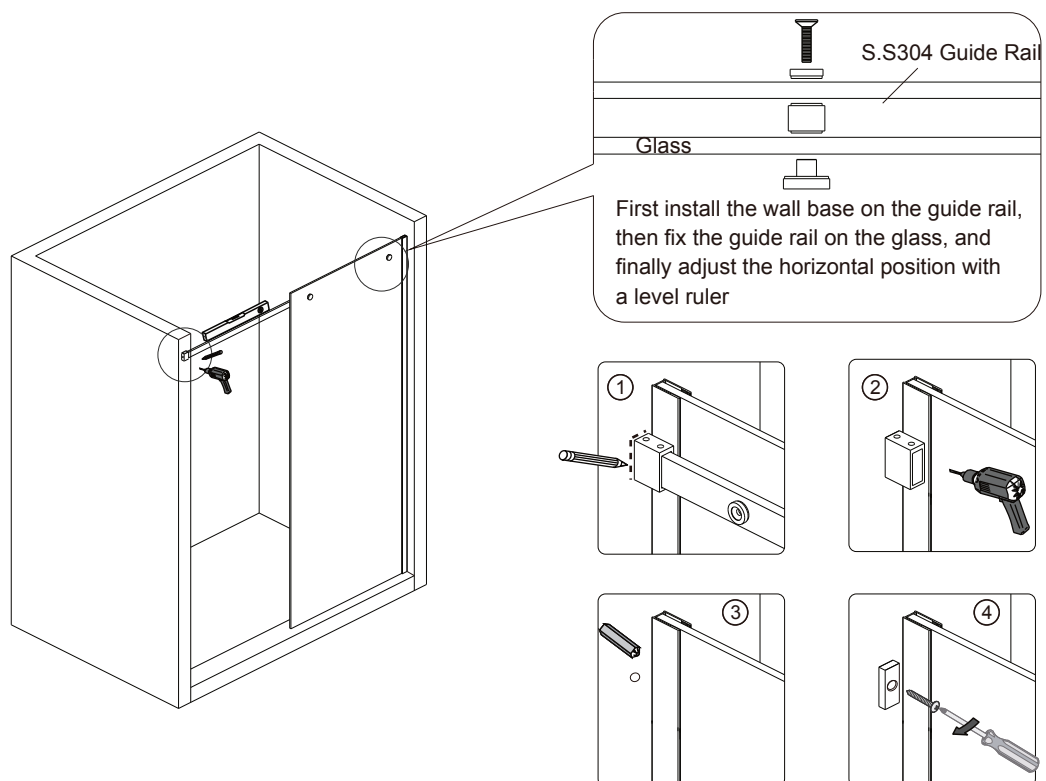


# MODEL : LWIDGI (WITH SIDE PANEL)

## Step 2

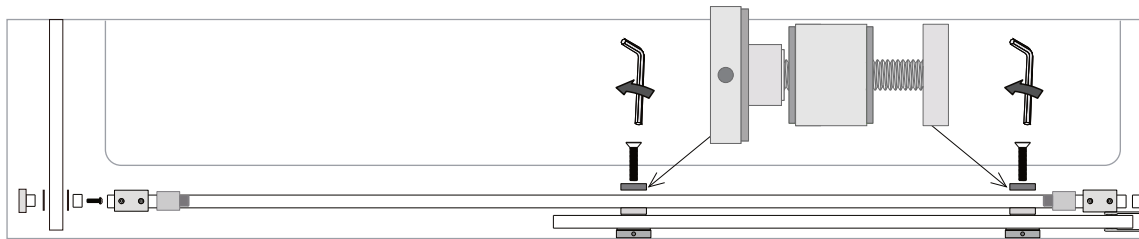


## Step 3

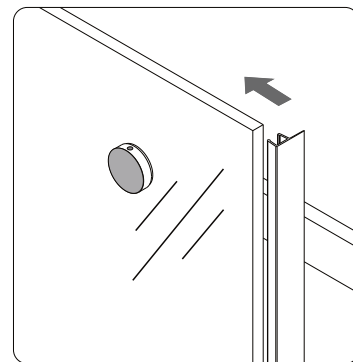
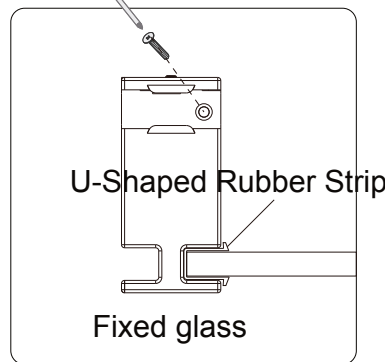
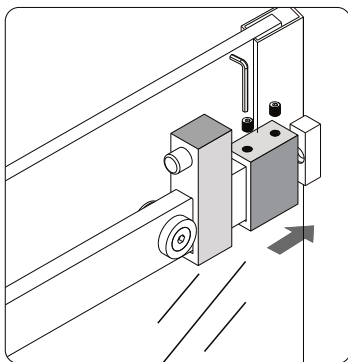


# MODEL : LWIDGI (WITH SIDE PANEL)

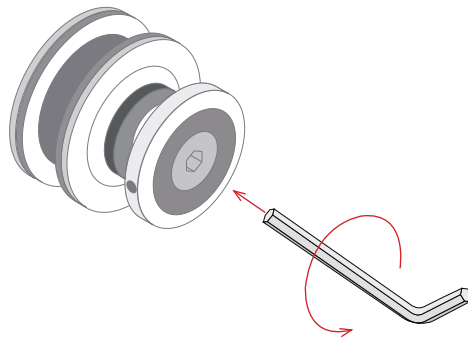
## Step 4



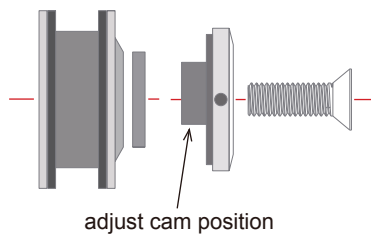
Install the anti-collision block onto the guide rail first,  
and then lock the guide rail and wall base tightly



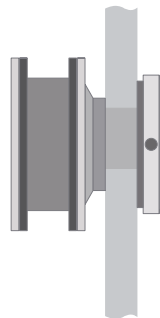
## Step 5



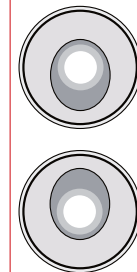
Disassemble the pulley and  
install it on the glass



adjust cam position



Cam position down=glass down

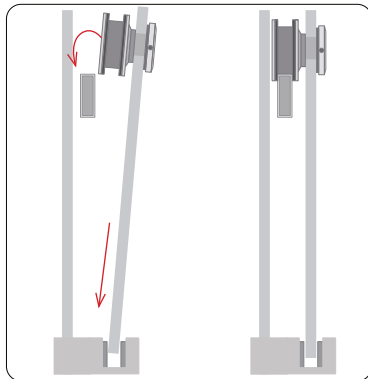


Cam position upwards=glass rises upwards

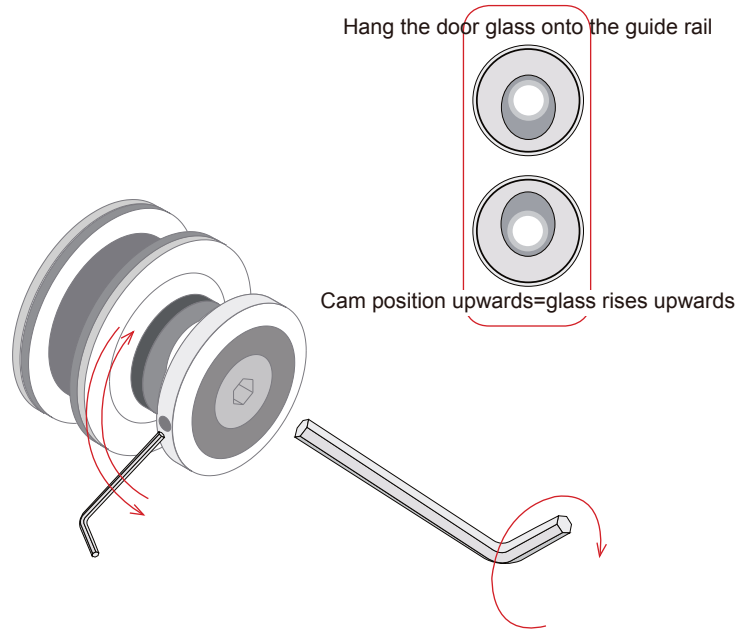


# MODEL : LWIDGI (WITH SIDE PANEL)

## Step 6

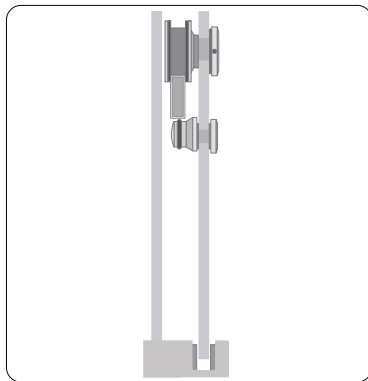


Hang the door glass on the guide rail.

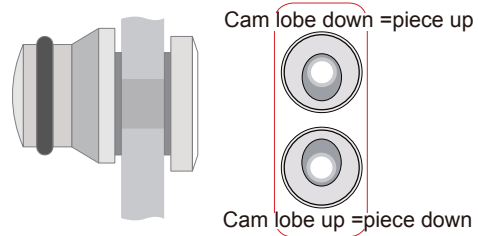
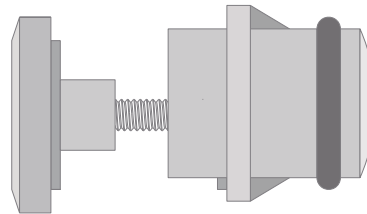


Hang the door glass onto the guide rail

Cam position upwards=glass rises upwards



Install anti jump components



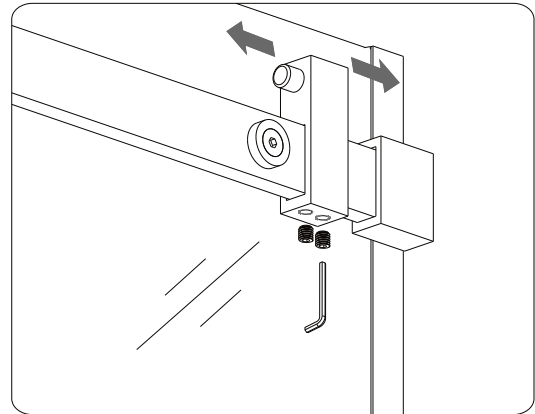
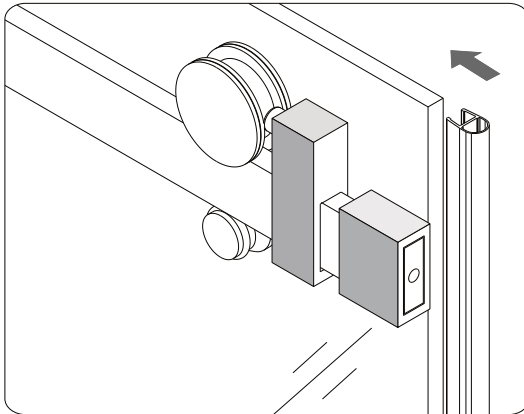
Cam lobe down =piece up

Cam lobe up =piece down

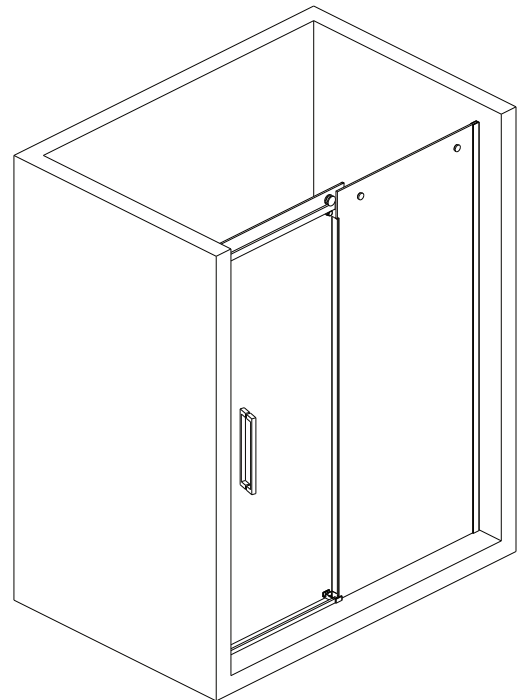
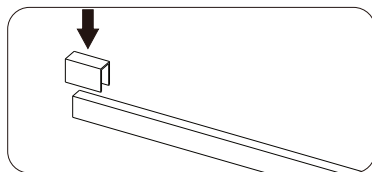
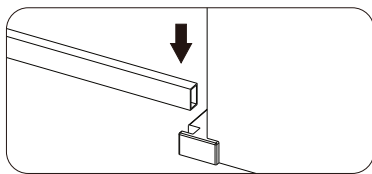
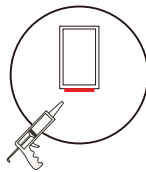
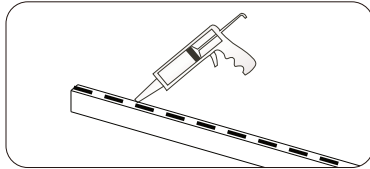


# MODEL : LWIDGI (WITH SIDE PANEL)

## Step 7



## Step 8



# MODEL : LWIDGI (WITH SIDE PANEL)

## Step 9

