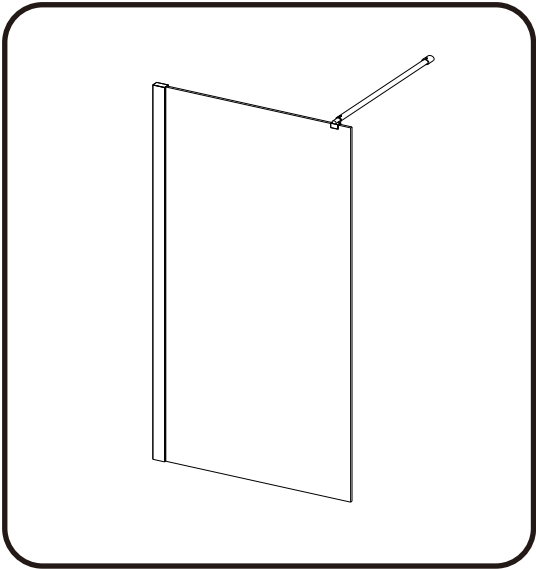
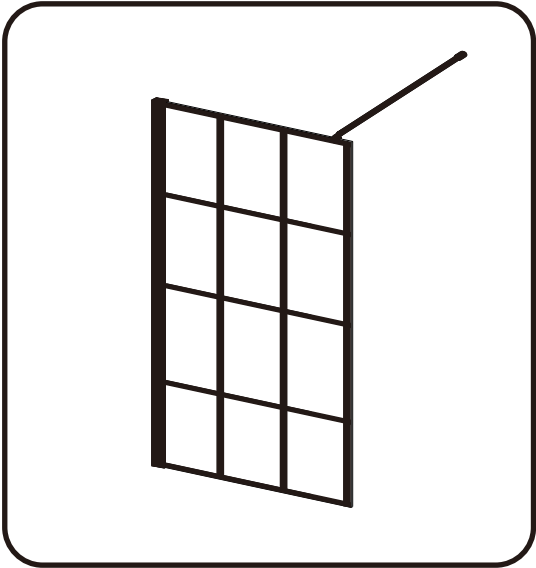


WALK IN

INSTALLATION INSTRUCTIONS



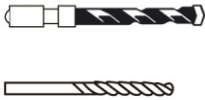
OR



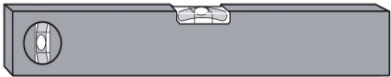
Tools Required



Drill



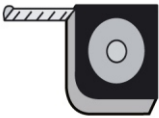
6mm Masonry Drill
3.2mm HSS Drill



Spirit level



Sealant Gun



Tape Measure



Pencil



**PH2 TYPE
Screwdriver**

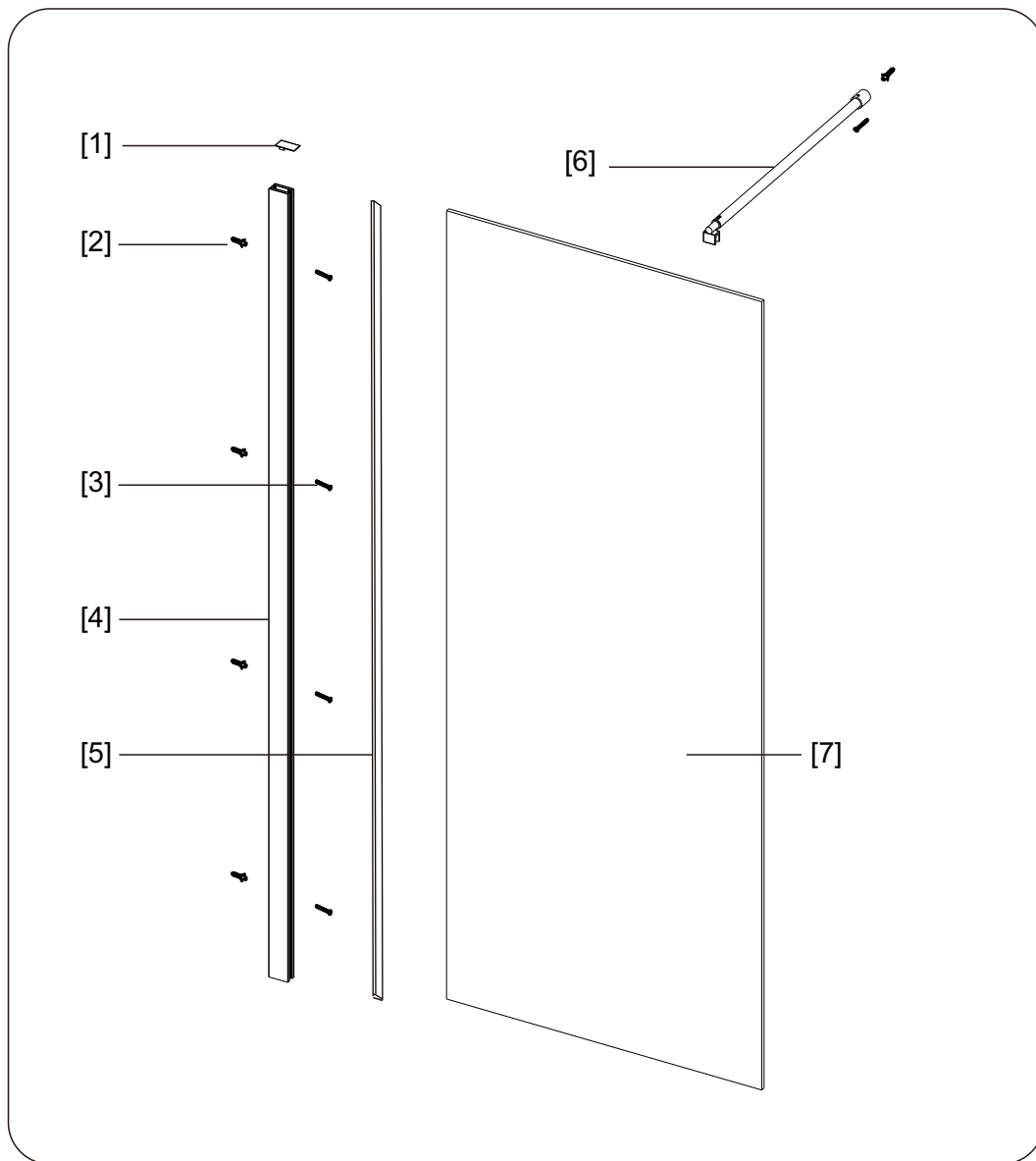
Please not hand tools NOT supplied.

IMPORTANT

These instructions assume that installation is done against solid/tiled walls.

The wall plugs supplied with the installation kit are for use on solid walls.Hollow or stud-partition walls will require alternative fixings.Please consult with a reputable trades person or hardware supplier for the correct type of fixing.

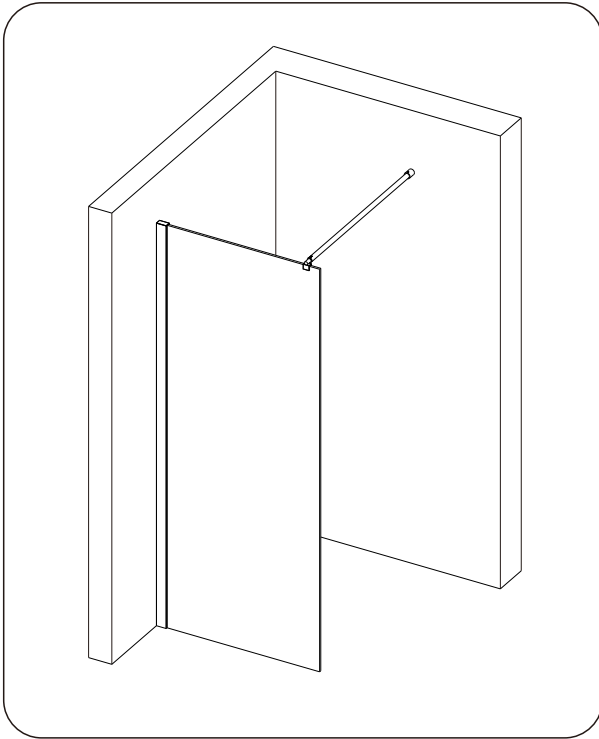
It may also be necessary to consult your tiling supplier about the correct method drilling your tiles.



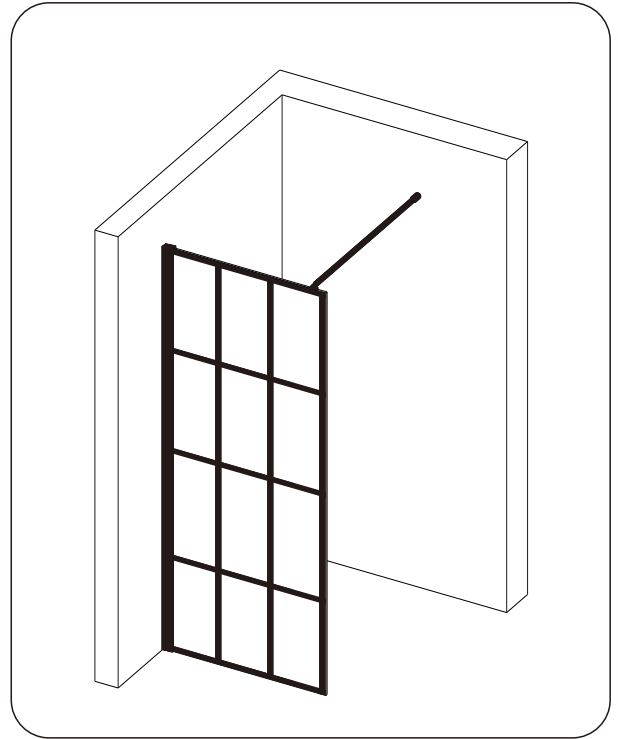
NO.	Description	Qty
1	Profile Cover Cap	1
2	Wall Anchor	5
3	Round Screw M4x30	5
4	Wall Profile	1
5	T Shaped Seal	1
6	Stainless Steel 304 Round Extension Bar 700-1100mm	1
7	Front Glass Panel	1

◆ Installation Steps

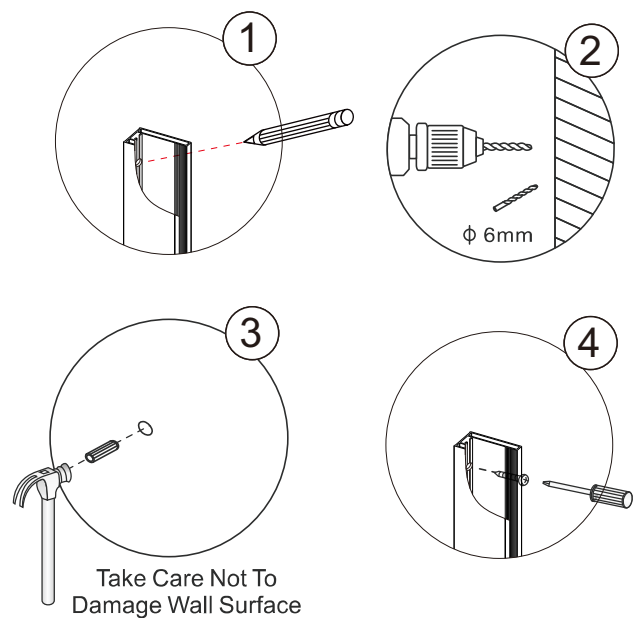
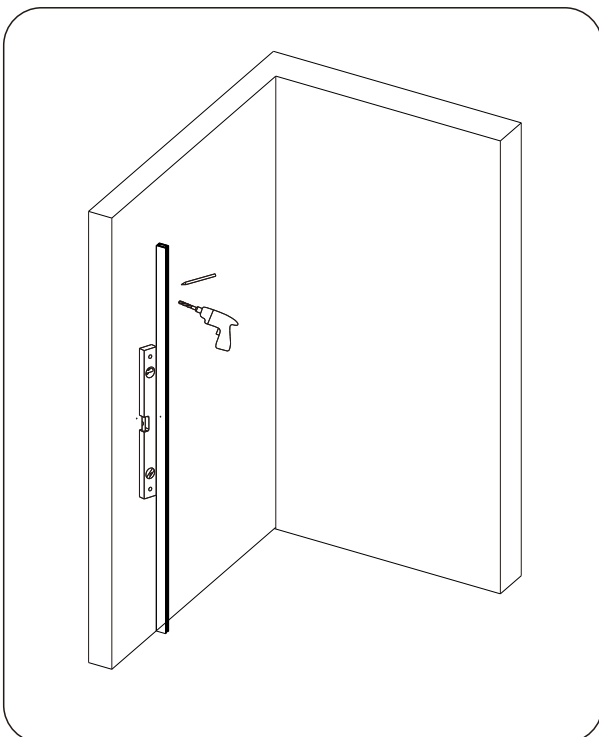
Step 1



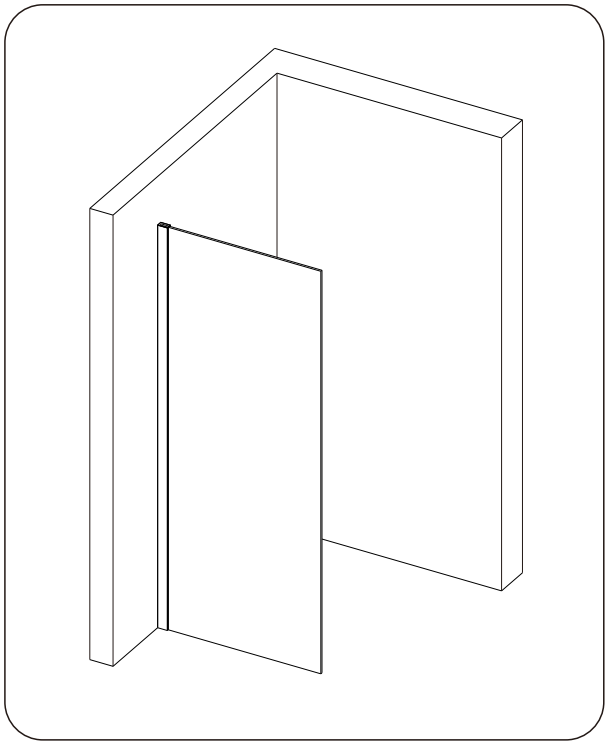
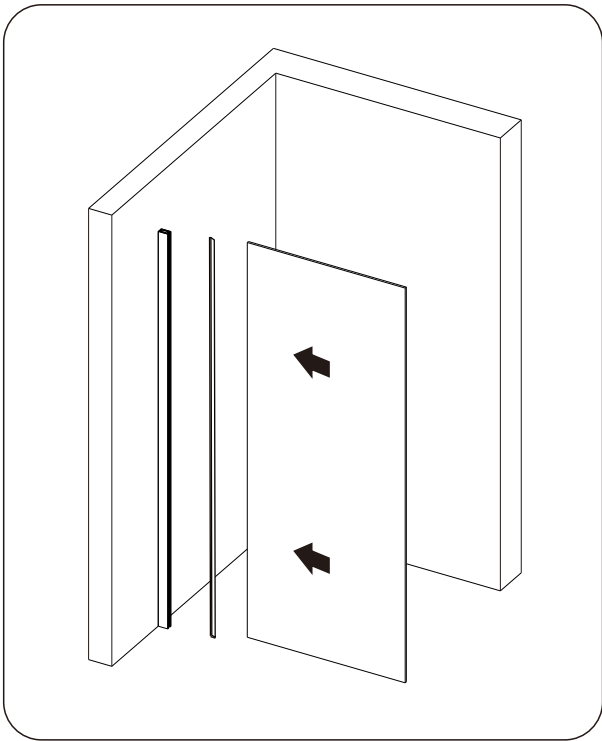
OR



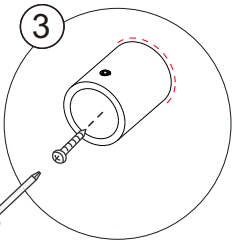
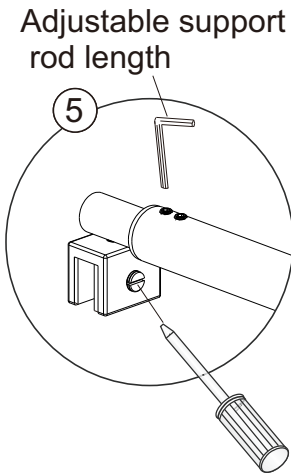
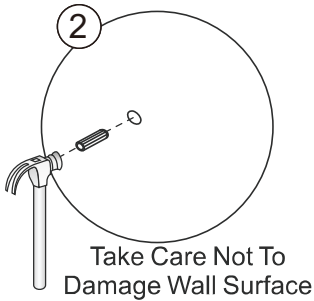
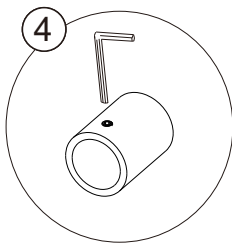
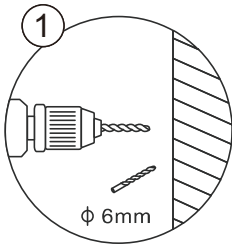
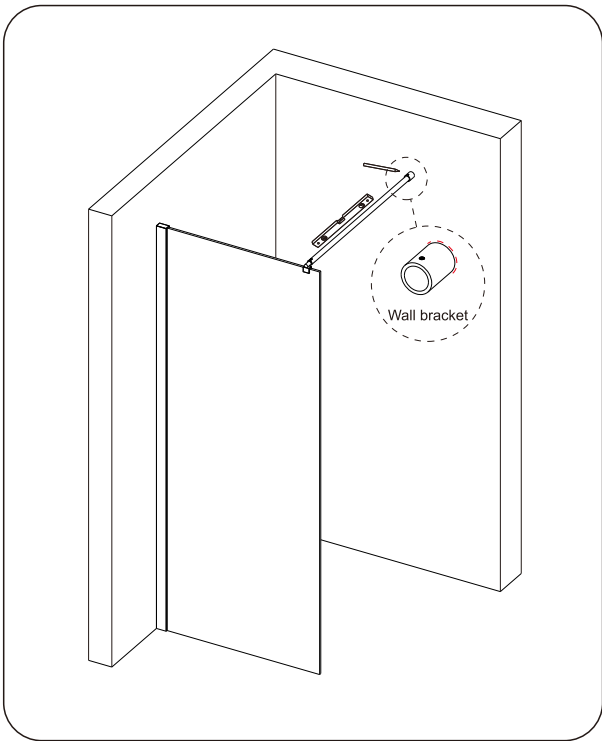
Step 2



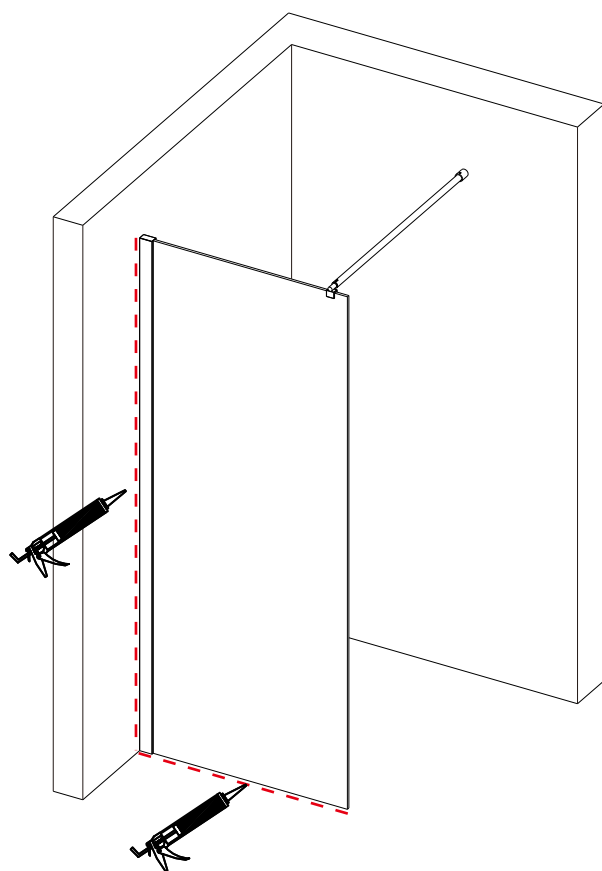
Step 3



Step 4



Step 5



Allow 24 hours for silicone to dry before use.

Silicone on the outside edge only